

NOTAE NUMISMATICAE

ZAPISKI NUMIZMATYCZNE



Tom XVI

MUZEUM NARODOWE W KRAKOWIE
SEKCJA NUMIZMATYCZNA
KOMISJI ARCHEOLOGICZNEJ PAN
ODDZIAŁ W KRAKOWIE

Kraków 2021

NOTAE NUMISMATICAE

ZAPISKI NUMIZMATYCZNE

Tom XVI

MUZEUM NARODOWE W KRAKOWIE
SEKCJA NUMIZMATYCZNA
KOMISJI ARCHEOLOGICZNEJ PAN
ODDZIAŁ W KRAKOWIE

Kraków 2021

Komitet naukowy / Scientific Committee:

Prof. Peter van Alfen, Prof. Michael Alram, Prof. Aleksander Bursche, Prof. François de Callataÿ, Dr Karsten Dahmen, Prof. Georges Depeyrot, Dr Haim Gitler, Zofia Gołubiew, Prof. Wiesław Kaczanowicz, Elżbieta Korczyńska, Prof. Katerini Liampi, Prof. Adam Małkiewicz, Prof. Andrew Meadows, Prof. Mariusz Mielczarek, Dr Jiří Militký, Prof. Janusz A. Ostrowski, Prof. Maciej Salamon, Prof. Bernhard Weisser

Redakcja / Editorial Board:

Redaktor / Editor in Chief – Jarosław Bodzek
Zastępca redaktora / Associate Editor – Mateusz Woźniak
Sekretarze / Secretaries – Dorota Malarczyk, Anna Bochnak, Barbara Zając

Redaktor tematyczny / Theme Editor:

Peter van Alfen

Redaktor językowy / Linguistic Editor:

Peter van Alfen

Recenzenci / Reviewers:

Prof. Bartosz Awianowicz, Dr Hab. Katarzyna Balbuza, Dr Hab. Mateusz Bogucki, Prof. Kevin Butcher, Dr Witold Garbaczewski, Prof. Matthias Hardt, Dr Johan Van Heesch, Dr Wilhelm Hollstein, Prof. Stanley Ireland, Dr Krzysztof Jarzęcki, Dr Szymon Jellonek, Dr Adam Kędzierski, Prof. Koray Konuk, Dr Piotr Kotowicz, Prof. Marek Olbrycht, Prof. Michał Parczewski, Dr Evgeni Paunov, Dr Grzegorz Śnieżko, Prof. Michael Vickers, Dr Eliza Walczak, Dr Ulrich Werz, Dr Tomasz Więcek, Dr David Wigg-Wolf, Dr Michał Wojenka, Dr Hab. Marcin Wołoszyn

Redaktorzy prowadzący / Managing Editors:

Dorota Malarczyk, Anna Kowalczyk

Tłumaczenia / Translations:

Jarosław Bodzek, Karolina Kariat, Andrzej Leligdowicz, Nasim Luczaj, Borys Paszkiewicz, Anna Sosenko, Iwona Zych

Korekta / Proofreading:

Aedaan Shaw

Projekt graficzny i typografia / Graphic design and desk top publishing:

Luiza Berdak

Skład i lamanie / Typesetting and page layout:

Zofia Stawiska

Adres redakcji / Address of the Editorial Office:

Muzeum Narodowe w Krakowie
ul. Marszałka Józefa Piłsudskiego 12, 31-109 Kraków
tel. (+48) 12 433 58 50, e-mail: notae@mnk.pl
<http://mnk.pl/notae-numismaticae-zapiski-numizmatyczne-1>

Wyłącznie odpowiedzialność za przestrzeganie praw autorskich dotyczących materiału ilustracyjnego ponoszą autorzy tekstów.
Authors of the texts bear the sole responsibility for observing the copyright illustrations.

Wersją pierwotną *Notae Numismatae – Zapiski Numizmatyczne* jest wersja elektroniczna.
The electronic edition of the *Notae Numismatae – Zapiski Numizmatyczne* is treated as its original version.

© Muzeum Narodowe w Krakowie i Autorzy, 2021

ISSN 1426-5435

SPIS TREŚCI / CONTENTS

- 9 Od redakcji
10 From the Editors

ARTYKUŁY / ARTICLES

- SŁAWOMIR SPRAWSKI
13 *The Temenidae, Who Came Out of Argos. Literary Sources and Numismatic Evidence on the Macedonian Dynastic Traditions*
Temenidzi, którzy przybyli z Argos. Macedońskie tradycje dynastyczne w źródłach literackich i świadectwach numizmatycznych
- CATHARINE C. LORBER
43 *A Die Study of the Silver Staters (Didrachms) of Thessalian Larissa*
Studium powiązań stempli srebrnych staterów (didrachm) tesalskiej Larissy
- JAROSŁAW BODZEK
77 *The Sabakes' "Owl" from the Collection of the District Museum in Toruń and Some Notes on the Coinage of the Penultimate Achaemenid Satrap of Egypt*
„Sówka” Sabakesa ze zbiorów Muzeum Okręgowego w Toruniu i kilka uwag na temat mennictwa przedostatniego achemenidzkiego satrapy Egiptu
- ÖMER TATAR
97 *Two Rare Shield/Helmet Type Macedonian Regal Bronze Coins from the Collection of the Museum of Anatolian Civilizations in Ankara*
Dwie rzadkie królewskie monety macedońskie typu „tarcza/helm” z kolekcji Muzeum Anatolijskich Cywilizacji w Ankarze
- ANNA ANZORGE-POTRZEBOWSKA
107 *On the Search for *Damnatio Memoriae* on Ancient Roman Numismatic Artefacts. Research Assumptions*
O poszukiwaniach damnatio memoriae na starożytnych rzymskich numizmatach. Postulaty badawcze
- PIOTR JAWORSKI
125 *Reading the History of the Roman Fort in Apsaros (Autonomous Republic of Adjara, Georgia) from a Numismatic Perspective*
Odczytując historię rzymskiego fortu w Apsaros (Adżarska Republika Autonomiczna, Gruzja) z perspektywy numizmatycznej

- 143 PRZEMYSŁAW DULĘBA, ANDRZEJ ROMANOWSKI
New Finds of Roman Coins from the Przeworsk Culture Settlements
in the Nidzica and Szreniawa River Basins
*Nowe znaleziska monet rzymskich na osadach kultury przeworskiej w dorzeczu
Nidzicy i Szreniawy*
- 177 DAGMAR GROSSMANNOVÁ
Finds of Byzantine Coins in the Collection of the Moravian Museum.
A Contribution to the Completion of the Register of Byzantine Coins in Moravia
*Znaleziska monet bizantyńskich w kolekcji Morawskiego Muzeum Krajowego.
Przyczynek do uzupełnienia rejestru monet bizantyńskich na Morawach*
- 201 DOROTA MALARCZYK, ŁUKASZ MIECHOWICZ, SYLWIA WAJDA
Dirham Imitations and Glass Beads from the 10th Century Discovered
in an Early Medieval Building in Kłodnica, Municipality of Wilków, Lublin
Voivodeship
*Naśladownictwa dirhamów i szklane paciorki z X w. odkryte we wczesno-
średniowiecznym budynku w Kłodnicy, gm. Wilków, woj. lubelskie*
- 225 ANNA BOCHNAK
Drohiczyn-type Small Lead Seals with the Image of a Bird from the Collection
of the National Museum in Krakow. Old Ruthenian Sigillography Versus Early
Piast Numismatics
*Plomby typu drohiczyńskiego z wyobrażeniem ptaka w kolekcji Muzeum
Narodowego w Krakowie. Staroruska sfragistyka versus wczesnopiastowska
numizmatyka*
- 243 LILIA DERGACIOVA, IRINA STANKIEWICZ
Coin Hoard of Moldovan Copper Coins Found in the Belgorod Fortress
on the Dniester River (Ukraine)
*Skarb miedzianych monet moldawskich znaleziony na terenie twierdzy Białogród
nad Dniestrem (Ukraina)*
- 261 ELŻBIETA M. KŁOSIŃSKA, BORYS PASZKIEWICZ
A Coin Hoard from the 16th Century Found During Archaeological Excavations
at Perespa, and Its Context
*Zbiór monet z XVI w. znalezione podczas wykopalisk archeologicznych
w Perespie i jego kontekst*

RECENZJE / REVIEWS

- 301 JAROSŁAW BODZEK
HAIM GITLER, OREN TAL, *The Nablus 1968 Hoard. A Study of Monetary
Circulation in the Late Fourth and Early Third Centuries BCE. Southern Levant,*

with contribution of ARNOLD SPEAR and SYLVIA HURTER, DANA ASHKENAZI and ADIN STERN, *Numismatic Notes and Monographs* 171, The American Numismatic Society, New York 2019, 209 pages, 41 plates; ISBN 978-0-89722-360-7; ISSN 0078-2718

JAROSŁAW BODZEK

- 307 CATHARINE C. LORBER, *Coins of the Ptolemaic Empire. Part I: Ptolemy I through Ptolemy IV. Volume 1: Precious Metal, Volume 2: Bronze*, The American Numismatic Society, New York 2018, 625 and 205 pages, 76 and 46 plates; ISBN 978-0-89722-332-4

BARBARA ZAJĄC

- 312 RENATA CIOŁEK, ROKSANA CHOWANIEC (eds.), *Aleksandria. Studies on Items, Ideas and History Dedicated to Professor Aleksander Bursche on the Occasion of his 65th Birthday*, Harrassowitz Verlag, Wiesbaden 2021, 446 pages; ISBN 978-3-447-11554-4; DOI: 10.2307/j.ctv1h9djt

ALESSANDRA MAGNI

- 322 PAWEŁ GOŁYŻNIAK, *Engraved Gems and Propaganda in the Roman Republic and under Augustus*, Archaeopress Roman Archaeology 65, Archaeopress, Oxford 2020, 618 pages, 1015 figures; ISBN 978-1-78969-539-7

KATARZYNA BALBUZA

- 328 RICHARD ANTHONY ABDY and PETER FRANZ MITTAG, *The Roman Imperial Coinage, Volume II, Part 3: From AD 117–138, Hadrian*, Spink, London 2019, 332 pages, 218 plates, indices; ISBN 978-1-912667-18-5

BARBARA ZAJĄC

- 333 MATEUSZ BOGUCKI, ARKADIUSZ DYMOWSKI, GRZEGORZ ŚNIEŻKO (eds.) *Slivers of Antiquity. The Use of Ancient Coins in Central, Eastern and Northern Europe in the Medieval and Modern Periods / Okruchy starożytności. Użytkowanie monet antycznych w Europie Środkowej, Wschodniej i Północnej w średniowieczu i okresie nowożytnym*, Wydawnictwo Uniwersytetu Warszawskiego, Warszawa 2020, 444 pages, 1 map; ISBN 978-83-235-4697-9; DOI: 10.31338/uw.9788323547051

KRONIKA / CHRONICLE

MATEUSZ WOŹNIAK

- 341 Kronika Gabinetu Numizmatycznego Muzeum Narodowego w Krakowie (2020)
345 The Chronicle of the Numismatic Cabinet of the National Museum
in Krakow (2020)

PRZEMYSŁAW DULĘBA

University of Wrocław

Institute of Archaeology

ORCID: 0000-0002-8444-5845

ANDRZEJ ROMANOWSKI

National Museum in Warsaw

ORCID: 0000-0002-5041-8806

New Finds of Roman Coins from the Przeworsk Culture Settlements in the Nidzica and Szreniawa River Basins

ABSTRACT: The article presents new discoveries of Roman coins made during regular surface surveys on Przeworsk culture settlements located in the northern part of the loess highlands of the Western Lesser Poland region. A total of ten Roman coins were found in five sites, most of them issued during the Antonine dynasty. In almost all cases, they were accompanied by artefacts illustrating the variety of settlement contexts related to monetary finds. The majority of such finds constitute accurate date stamps showing the chronology of the settlement development, which may be an additional argument in the discussion on the influx of Roman coins into the Central European *Barbaricum*.

KEY WORDS: Roman coins, Przeworsk culture, surface survey, settlement archaeology, chronology

ABSTRAKT: *Nowe znaleziska monet rzymskich na osadach kultury przeworskiej w dorzeczu Nidzicy i Szreniawy*

Artykuł prezentuje nowe znaleziska monet rzymskich dokonane podczas badań powierzchniowych na osadach kultury przeworskiej położonych w północnej części wyżyny lessowej w zachodniej Małopolsce. Na pięciu stanowiskach znaleziono dziesięć monet rzymskich, w większości bitych w czasach dynastii Antoninów.

Prawie we wszystkich przypadkach monetom towarzyszyły artefakty bardzo dobrze ilustrujące różnorodne konteksty osadnictwa. Większość tych znalezisk stanowi dokładne datowniki pokazujące chronologię rozwoju osadnictwa, co może stanowić dodatkowy argument w dyskusji na temat napływu monet rzymskich do środkowo-europejskiego *Barbaricum*.

SŁOWA KLUCZOWE: monety rzymskie, kultura przeworska, badania powierzchniowe, archeologia osadnictwa, chronologia

The finds of Roman coins analyzed in the presented study come from five settlements in Lesser Poland, surface-surveyed in 2010–2011. All sites are situated in the northern part of the region, between the Nida in the northeast and the Szreniawa in the southwest, parallel to the Vistula line (Map 1). The extreme settlements – in Sudół and Muniakowice – are situated approx. 30 km from each other in a straight line. Taking into account their position, one can conclude that they are located in the clearly visible Przeworsk culture settlement area, located on the fertile Western Lesser Poland loess highlands. During the Roman Period and particularly in its decline, the region was very heavily inhabited, which is confirmed by the systematic surface surveys carried out from the beginning of the 1980s as part of the nationwide Polish Archaeological Record (AZP) program.¹ The finds presented below include a total of 10 Roman coins. The share of Roman coins found in Przeworsk culture settlements in the total number of finds is about 10%.² Finds from Lesser Poland dominate here (181 artefacts)³ due to the abundant and thoroughly studied material from several settlements, mainly from nearby Jakuszowice, Kazimierza district⁴, as well as Pełczyska⁵ and Nieprowice, Pińczów district.⁶

¹ DOBRZAŃSKA 1997: 331–382.

² CIOŁEK 2009: 156. This number is certainly higher today. The author states it is 160 coins, also cited by ROMANOWSKI 2012b: 71.

³ The basis for these calculations is the inventory of A. Kunisz (1985), the article by A. Dymowski (2011) and the finds from Jakuszowice, Kazimierza district; Pełczyska, Pińczów district (a dozen unpublished coins from this site was not included); Nieprowice, Pińczów district; Zagórze, Kazimierza district; Aleksandrowice, Kraków district and 10 coins included in this study. The analyzes did not take into account the finds from the Lublin region, due to the slightly different cultural situation of these lands in the Roman Influence Period. Finds from settlements account for about 2.1% of all Roman coin finds from Lesser Poland (except for the Lublin region). Therefore, it should be assumed that the indicator for the entire Przeworsk culture will be different than the one provided by R. Ciołek (2012). This may be due to the fact that the author does not take the latest discoveries into account, which mainly include stray artefacts and hoards, which changes the proportions between the categories of finds.

⁴ BURSCHE 1997; RUDNICKI 2014.

⁵ IDEM 2007.

⁶ DULĘBA and ROMANOWSKI 2018.

SUDÓŁ, PIŃCZÓW DISTRICT

The first settlement is located in Sudół, Działoszyce commune, Pińczów district. The surface survey led to the conclusion that sites 10 and 11 (AZP 96-61/75-76) are actually part of one, quite extensive settlement, located in a small valley formed by a tributary of the Stradówka River. Apart from six Roman coins, which will be discussed below, only Przeworsk culture pottery has been found here, namely 140 vessel fragments.

Six Roman denarii were found here, including one subaerat. All the coins are typical for the Central European *Barbaricum* (except for the territories settled by the Baltic peoples).⁷ Their chronology ranges from the reign of Titus – a denarius from AD 79 – to the times of Marcus Aurelius, represented by a denarius minted for Faustina the Younger in AD 161–175. A small, chronologically compact representation of coins fits into a wider time horizon of finds known from other Lesser Poland settlements. Coins issued between the reigns of Trajan and Antoninus Pius (the so-called Antonine coins) are the most numerous (83.3%), which is consistent with the above-mentioned data.⁸ The only subaerate, dated from Hadrian's reign, accounts for 16.6% of all monetary finds and is comparable to the coins of this type from Pełczyska. It also does not differ significantly from the other discussed settlements in Lesser Poland.⁹ Most of the coins from this site show signs of considerable wear, which indicates that they remained in circulation for quite a long time – up to two centuries, considering the period of the settlement development. However, their varied condition indicates that they were put to different uses. No special features were observed that could indicate a specific function of the coins and, since they constitute stray finds, no interpretation may be attempted. They were found in two small clusters in the NW and SE parts of the studied area, but without any detectable relationship with the location of their deposition.

Only a few vessel fragments (Pl. 1, Figs. 1–7) found in Sudół can be associated with the Early Pre-Roman and the Early Roman Periods, which may indicate a relatively small number of inhabitants or temporary settlement by the representatives of Przeworsk culture. In contrast, the site was heavily populated in the Late Roman Period and in the Migration Period, as evidenced by chronologically matching 124 fragments of wheel-made vessels. 17 fragments of *Krausengefäss* type storage vessels (Pl. 1, Figs. 15–16) constitute a distinctive category of pottery found in Sudół. In addition to the aforementioned types, wheel-made pottery is represented by various types of bowls and vases with slightly thickened rims turned outwards, made

⁷ BURSCHE 2004: 195–196.

⁸ DULĘBA and ROMANOWSKI 2018: 73–74, Fig. 9.

⁹ *Ibidem*: 77–78.

both in the so-called “smooth” (Pl. 2, Figs. 2–8) and “rough” technology (Pl. 2, Figs. 13–20). A bowl with a clearly separated, cylindrical neck, preserved in a condition enabling the reconstruction of the rim diameter (Pl. 2, Fig. 8) finds good analogies in the material from both settlements and cemeteries of the Przeworsk culture.¹⁰ Vessels with a footring (Pl. 2, Fig. 11), including a faceted one (Pl. 2, Fig. 12) were also found in Sudół. A fragment with a flanged rim constitutes a characteristic element of the wheel-made pottery (Pl. 2, Fig. 9).

Similar forms are often found in Przeworsk culture sites. They appear already in complexes dating back to stage C1b, but their greatest popularity is recorded in stages C2-D.¹¹ The fragment of the pitcher rim is definitely the most interesting pottery artefact found in Sudół (Pl. 2, Fig. 1). It is most likely derived from forms distinguished by a slender, cylindrical neck, a bulbous body with a band-shaped handle. Pitchers are relatively rare in the Przeworsk culture, known almost exclusively from settlements and cemeteries in Lesser Poland and Upper Silesia.¹² The closest analogies to the specimen from Sudół come from a nearby site in Jakuszowice.¹³ The analyzed pitchers were considered to be derived from pottery produced in the Danubian provinces, especially from the so-called Murga type pottery found in the Carpathian Basin and Pannonia, mainly in the 5th century AD.¹⁴ The collection in question also includes a characteristic fragment of a vessel with vertical walls, decorated with plastic strips (Pl. 1, Fig. 8). Such shape is specific for usually small cups, known from artefact sets dating back to the early stage of the Migration Period.¹⁵

The archaeological material obtained from site 10-11 in Sudół clearly suggests linking the excavated Roman coins with the Late Roman Period and the Migration Period, as the vast majority of the vessels described above presents such chronology.

MIŁAWCZYCE, KAZIMIERZA DISTRICT

Site 8 (AZP 96-61/116) in Miławczyce, Czarnocin commune, Kazimierza district is located 800 m south of site 10-11 in Sudół. It is vast and multicultural, with rich settlement traces dated to the Przeworsk culture. A single Roman denarius was found during the survey in Miławczyce.

¹⁰ KORDECKI and OKOŃSKI 1999: Figs. 4a–d, 11b, 19b; RODZIŃSKA-NOWAK 2006: 88–89, Pls. VII: 1, VIII: 7, IX: 6, XII: 2, XIII: 5, XIV: 5–6, XV: 8, XIX: 2, 9, XXX: 5, LXI: 2.

¹¹ DOBRZAŃSKA 1980: 98–100; RODZIŃSKA-NOWAK 2006: 103.

¹² *Ibidem*: 109–11; GRYGIEL, PIKULSKI and TROJAN 2010: 93, Fig. 13; KORDECKI and OKOŃSKI 1999: Figs. 3a, 10j.

¹³ RODZIŃSKA-NOWAK 2006: Pls. XXXVIII: 7, XLIV: 1.

¹⁴ *Ibidem*: 109.

¹⁵ DOBRZAŃSKA 2008: 119–120.

The Commodus denarius from AD 183 was minted in Rome and constitutes another standard find related to the largest influx of Roman denarii in the early 3rd century AD.¹⁶ Its good condition indicates a short circulation time. The site also includes other artefacts dated to the Roman Period, including a bronze fibula with a high catch plate associated with the VII Almgren group, dated to stage C1b (AD 210/230–260).¹⁷ It is so far the latest so precisely dated item found in the settlement. Therefore, considering the current state of research it could be assumed that together with a few fragments of wheel-made vessels from the Late Roman Period it marks the final stage of the settlement in Miławczyce. Such a conclusion would be important in the context of the denarius found, as taking into account the time of its usage on the Polish lands, that would enable confirming short time of its circulation within the settlement.

The settlement functioning in the Przeworsk culture period is specified by metal artefacts. In Miławczyce, such a find was a bow of an iron fibula decorated with a bronze comb (Pl. 3, Fig. 1), probably representing 2nd series of group IV according to O. Almgren. Unfortunately, its poor condition does not allow for establishing a precise typology, but it seems to be related to highly profiled fibulae, characteristic of the Early Roman Period.

Another fibula is much better preserved. It is a bronze brooch with a high sheath, a massive, arched bow with a triangular cross-section and a knob (Pl. 3, Fig. 2). The artefact does not have an exact equivalent in the Almgren typology, but it can be related to group VII, characteristic to items with a high sheath. Similar fibulae, known from Upper Silesia, were analyzed by K. Godłowski, who indicated that similarly to other artefacts from this group, they occur mainly in stages B2/C1, C1a and C1b.¹⁸ The fibula from Miławczyce is additionally decorated with a knob, characteristic of a later stage, namely C1b. This is also how similar fibulae from the cemetery in Drochlin, Włoszczowa district were dated.¹⁹

Only a single fragment of the next fibula was preserved. It is a flat, band-shaped bow with a two-part construction, provided with a metope at the foot (Pl. 3, Fig. 3). Its features allow to relate it to the 1st series of Almgren's group VI. Cross-shaped fibulae with a two-part structure are typical of the Wielbark, Cherniakhiv as well as Elbe Germanic cultures, and they appear only sporadically in the Przeworsk culture.²⁰ Fibulae of this type were probably used mainly in the early stages of the Late Roman Period.

¹⁶ I. a. BURSCHE 2004: 195–205; more on the topic in DYMOWSKI 2013.

¹⁷ See below in this article.

¹⁸ GODŁOWSKI 1977: 23–24, Pl. XXIV: 2, 5–6.

¹⁹ KACZANOWSKI 1987: 60, Pl. XXIV: 4–6.

²⁰ GODŁOWSKI 1981: 27.

A two-conical spindle fragment (Pl. 3, Fig. 4), a circular bronze link, possibly a belt element (Pl. 3, Fig. 5), and a silver lump (Pl. 3, Fig. 6), probably used in jewelry production, can also be connected to the Przeworsk culture settlement.

64 pottery fragments associated with the Przeworsk culture settlement were also excavated in site 8 in Miławczyce, and this only includes 7 fragments of wheel-made vessels, dated probably to the Late Roman Period. A set of vessels typical of the Pre-Roman Period (Pl. 3, Figs. 7–15) was also found here, including a cup with an X-shaped handle (Pl. 3, Fig. 11), which usually occurs in stage A2, less frequently at the beginning of stage A3.²¹ Fragments of blackened vessels with thickened rims are also dated to this period (Pl. 3, Figs. 8–10). Fragments of two pitchers with vertical rims are characteristic for the turn of the Late Pre-Roman Period and the Early Roman Period (Pl. 3, Fig. 7; Pl. 4, Fig. 15). Similar vessels are known from the Przeworsk culture²² and from the Tyniec group settlements located near the present-day city of Krakow.²³ A cup fragment has a similar chronology, probably coming from a vessel with a semicircular profile, with a rim as thick as its walls (Pl. 4, Fig. 24). The vast majority of the analyzed vessel fragments are typical of the Early Roman Period, especially the hand-made pots with an s-shaped profile, sometimes decorated with finger imprints (Pl. 4, Fig. 6). A cup fragment distinguished by a massive and horizontally elongated handle (Pl. 4, Fig. 13) is a popular vessel, often found in sedimentary materials and occurring mainly in stage B2.²⁴ A fragment of a characteristic bowl on a hollow stem has the same dating (Pl. 4, Fig. 12).²⁵

KOŚCIEJÓW, MIECHÓW DISTRICT

Site 23 (AZP 97-59/104) in Kościejów, Raławice commune, Miechów district, is unique among the ones analyzed in this paper, as the only small trace of human activity recorded here is dated to the Roman Period. It is a large (approx. 5 ha) multicultural settlement with at least several phases of usage, including the Eneolithic, Bronze and Early Iron Ages, La Tène period and throughout almost the entire Middle Ages. Of 198 pottery fragments, not one could be unquestionably associated with the Przeworsk culture settlement. This is unusual, as both during the AZP survey and verification studies in 2010 and 2011 the neighboring sites in and around the area of the Kościejów Valley presented rich traces of Przeworsk culture settlement dated from stage A2 of the Late Pre-Roman Period to the Early Migration Period.

²¹ DĄBROWSKA 1988: Pl. III: 40; CZARNECKA 2001: Figs. 6a, g.

²² GRYGIEL, PIKULSKI and TROJAN 2009: Fig. 13:3; SZPUNAR and DULĘBA 2009: Fig. 7a.

²³ POLESKA 2006: Pls. 6: 10; 135: 1, 254: 2; 278: 1; 352: 14.

²⁴ LIANA 1970: Pl. V: 2; GODŁOWSKI 1981: 62, Pl. IV: 3–4.

²⁵ GODŁOWSKI 1981: 65, Pl. IV: 15.

A Hadrian denarius from AD 134–138 was found here as a stray artefact. The coin is preserved in two thirds and is missing a significant part of the right side of its obverse, not due to intentional splitting. It may have deteriorated as a result of exposure to high temperatures, as indicated by the dark graphite patina on the coin. This may mean that the coin was deposited in a hearth, furnace, or burnt in a fire of the structure it was located in.²⁶ A closer look suggests yet another possible explanation for its damage. At the edge of the coin's fracture, one can observe two quite regular semicircular depressions, one directly above the other. This suggests the remains of two openings. An unsuccessful attempt to create them or a crack in such a weakened part of the coin could be a likely cause of its damage. Although this is not a typical position for making openings to create a coin necklace,²⁷ such cases are known from the territory of Poland.²⁸

Apart from a single find of a Roman coin, the only artefact associated with the settlement usage by the people of Przeworsk culture is a fragmentally preserved bronze fibula type a 68 (Pl. 5, Fig. 1), found approx. 100 m north-east of the denarius. Both were located within the site boundaries determined by the distribution of pottery from all the aforementioned chronological stages. A 68 fibulae are widespread in the European *Barbaricum*, being the most popular during stage B1b.²⁹ Thanks to numerous such finds in the Danubian provinces, where they appeared in well-dated contexts, the period of their mass use was established to AD 40–70.³⁰ Chronology of both artefacts is scattered and may indicate the minimum functioning time of the Przeworsk settlement from stage B1b to possibly C1b, if we take into account the possible influx of the denarius at the beginning of the 3rd century AD.³¹

At present, it is difficult to precisely define the nature of the find from Kościejów. It seems to be a trace of the temporary presence of the Przeworsk culture rather than a permanent one. The nearest settlement (site 19 AZP 97-59/100 in Kościejów), dated on the basis of a large series of pottery vessels to the Pre-Roman and Early Roman Period, was located approximately 1.2 km east of site 23.

²⁶ There are numerous examples of Roman coins being exposed to high temperatures, e.g. the denarii from Nieprovice or the settlement in Kalisz-Piwonice (ROMANOWSKI 2010: 30; IDEM 2012a: 85–87; DULĘBA and ROMANOWSKI 2018: 80).

²⁷ I.e. top of the coin, above the portrait.

²⁸ E.g. Antoninus Pius denarius dated AD 148–149 from Orzyce, Szelków commune (ROMANOWSKI 2008: 93, no. 147); republican denarius of C. Vibius Pansa dated 90 BC from Kicko, Kruszwica commune (DYMOWSKI 2016: 176, no. 59.3).

²⁹ LIANA 1970: 441.

³⁰ KOSSACK 1962: 128–131.

³¹ However, it is not entirely certain in the light of the latest findings regarding the possible influx of Roman coins in the 40s of the 2nd century AD (ROMANOWSKI 2014: 36).

PRZEMĘCZANY, PROSZOWICE DISTRICT

Another Roman coin was excavated at site 2 (AZP 98-59/81)³² in Przemęczany, Radziemice commune, Proszowice district, in the area of the modern manor house and its immediate surroundings. Interesting discoveries were made here already at the beginning of the 20th century, which was published by the pioneer of archaeological research in the area – Marian Wawrzeniecki. In 1905, during works related to leveling the area east of the manor house, ceramic vessels were found between the road that still exists today and the Ścieklec River.³³ One of them is a completely preserved wheel-made vase,³⁴ used by the representatives of the Przeworsk culture in the Late Roman Period. In 1910, a unique inhumation burial was excavated during the construction of a fence surrounding the manor. Based on the equipment and funeral rite, it was dated to the Migration Period.³⁵ These extremely interesting finds sparked a survey excavation in 1960, which resulted in uncovering the remains of a settlement dating back to the Late Pre-Roman period.³⁶

The surface survey in 2011 resulted in finding only 10 pottery fragments dated to the Early and Late Roman Period, a fragment of an iron knife and one Roman coin. All the items were obtained from an arable field located north of the manor house, near the cliff above the road. Such meagre results may be due to the poor accessibility of site 2 in Przemęczany. It is worth paying attention to the unusual location of burials within the settlement area, which is an unquestionable phenomenon for the Przeworsk culture settlements. It may possibly be explained by the chronological difference between the burial material and the settlement items discovered during 1960 excavation. However, the findings from the mentioned surface survey seem to contradict it, as both the wheel-made vessel fragments and the Roman coin, minted approx. mid-3rd century AD, confirm the existence of settlement in the immediate vicinity of the graves.

The coin fragment from Przemęczany is a provincial bronze of Trajan Decius of AD 249–251, minted in Dacia. Such finds are known from a few sites on the territory of Poland,³⁷ but none of them represent the issuance of the aforementioned emperor. Therefore, it is probably the first such coin to be discovered in Poland.

³² The AZP documentation contains an erroneous location of K. Godłowski's excavations from 1960, therefore site 1 (AZP 98-59/80) was defined as the settlement on the other side of the Ścieklec River, and site 2 (AZP 98-59/81), related to the information on the finds published by M. Wawrzeniecki, was presented without any detailed location. Most likely, all the archival information relates to the site at the manor house that still exists today.

³³ WAWRZENIECKI 1908: 79–80.

³⁴ *Ibidem*: Pl. XXIX.

³⁵ WAWRZENIECKI 1912: 50–51, Fig. 7, Pl. XVIII.

³⁶ POLESKA 1986: 135–182.

³⁷ Third-century coins registered in Poland accounted for 11.9% of all bronze coin finds, some of them were dated to the middle of the century (BEŁKOWSKA 1981: 142).

Similar items, probably representing the same horizon of findings, have been recorded in a small number in Poland, and only occasionally in settlements: in Brzezie, Kłaj commune – a sestertius of Philip Arab from AD 246–247, issued in Dacian mint Apulum;³⁸ in Jakuszowice, Kazimierza Wielka commune – AE of Trebonianus Gallus from AD 251, minted in *Viminacium*³⁹ and in Opatkowice, Proszowice commune – autonomous Macedonian bronze from AD 242 or 246.⁴⁰ The coin from Brzezie deserves special attention in this assemblage. This is the only coin, apart the one from Przemęczany, registered in Poland and in the same region, which was minted in the province of Dacia.⁴¹ More frequent bronzes from the middle of the 3rd century AD include coins minted in the above-mentioned Moesian mint in *Viminacium*, mainly discovered in the Czech Republic, Slovakia, southern Lesser Poland and western Ukraine. Monetary finds with such a chronology could have been transported north of the Limes by Germanic warriors returning from service in Roman auxiliary forces.⁴² The coin could have reached the settlement in Przemęczany already in stage C2, similarly to other mentioned bronzes. The bad condition of its surface is not the result of long circulation, but rather of corrosion processes. Particularly noteworthy is the fact that we are dealing with a coin fragment, and its shape and edge suggest intentional division. Rare examples of intentionally divided Roman bronze coins are known from the Polish territories – an as of Antoninus Pius divided into two halves from the 5th century AD treasure from Frombork,⁴³ a stray find of two-thirds of an Antoninus Pius sestertius, minted for Faustina I, from Pruchnow, Radziejów commune,⁴⁴ and two sestertii halves of Marcus Aurelius, minted for Lucilla, discovered in Skęczniewo, Dobra commune,⁴⁵ and in the vicinity of Międzychód – both stray finds. It is also possible that the sestertius of Marcus Aurelius minted for Faustina II and found in the settlement in Aleksandrowice, Zabierzów commune,⁴⁶ was also split in half intentionally. In the latter case, similarly to the find from Frombork, the coin was broken in two. It should be also noted that all the aforementioned artefacts were issued by two Antonine emperors. This may indicate a certain phenomenon concerning the division of

³⁸ ROCZKALSKI and WŁODARCZAK 2011: 359–367, Figs. 13.1–2. In this paper the coin designated as the sestertius of Phillip II; BODZEK, JELLONEK and ZAJĄC 2019: 55, 56, 59, 67, 71, Tab. 2: 3, Pl. 1: 2.

³⁹ BURSCHE 1997: 123, 144, nos. 104, 147, Pl. IX: 104.; BURSCHE, KACZANOWSKI and RODZIŃSKA-NOWAK 2000: 118.

⁴⁰ BURSCHE 1999: 131, n. 38.

⁴¹ BODZEK, JELLONEK and ZAJĄC 2019: 55, 59.

⁴² BURSCHE, KACZANOWSKI and RODZIŃSKA-NOWAK 2000: 118.

⁴³ CIOŁEK 2001: 50, no. 63:11.

⁴⁴ DYMOWSKI and RUDNICKI 2012: 243, no. 19.

⁴⁵ DYMOWSKI 2011: 144, no. (W 43) 288. The coin was found at the bottom of the Jeziorsko reservoir.

⁴⁶ BODZEK 2015: 120, 124, no. 7.

bronze coins concerning precisely these emperors – Antoninus Pius and Marcus Aurelius, particularly the sestertii issued on behalf of their spouses. However, it should be noted that the Antonine dynasty bronzes are the largest group of such coins registered in the Central European *Barbaricum*, including in the Western Baltic areas.⁴⁷ Taking into account the above-mentioned examples, it should also be noted that the techniques used to divide the coins differ. The artefacts from Skęczniew and Międzychód were split relatively uniform cuts, perpendicular to the surface, one or two on each side of the coin. The sestertius from Pruchnów bears traces on the obverse of multiple strokes next to each other along the entire length of the cut, which may have been done prior to breaking or cutting the coin.⁴⁸ The bronze coin from Przemęczany presents yet another technique, which probably involved cutting the coin on two sides and then breaking it, which resulted in a characteristic protrusion in its central part.

Without going into more detail on split Roman silver coins, discovered much more often and interpreted as a raw material source for local craftsmen,⁴⁹ the above examples may indicate a similar phenomenon with regard to bronze coins. Their usage in domestic crafts was a fairly widespread practice in the Northern European *Barbaricum*⁵⁰ and their division should be seen in this context rather than as a need to obtain lower nominal value.⁵¹ Such observation regarding the coin function leads us to a conclusion that the settlement in Przemęczany may have been periodically⁵² visited by a metallurgist or had a permanent workshop dated to stage C2, whose relics have not yet been located.

MUNIAKOWICE, KRAKOW DISTRICT

A single republican denarius was found on site 9 (AZP 98-58/94) in Muniakowice, Słomniki commune, Krakow district. The site is multicultural, with extremely intense traces of settlement from the Bronze Age to the late Middle Ages and modernity.

A republican denarius issued by M. Baebius Q. f. Tampilus in 137 BC was found within the settlement in Muniakowice. It is not an isolated case in terms of the Przeworsk culture settlements in Lesser Poland, as Republic coins were

⁴⁷ BEŁKOWSKA 1981: 133; ZAPOLSKA 2013: 106.

⁴⁸ The comments presented here were made on the basis of the available photographs, which do not allow for more precise observations. The illustrative material was available thanks to the courtesy of A. Dymowski, to whom we would like to express my gratitude.

⁴⁹ E.g. BURSCHE, KACZANOWSKI and RODZIŃSKA-NOWAK 2000: 111–112; BURSCHE 2010: 202.

⁵⁰ ZAPOLSKA 2014: 108; HORSNÆS 2006: 84, no. 56; BURSCHE 2011: 11.

⁵¹ It should be noted that the division of bronze coins happened in Roman territories at the turn of the Republic and the early Empire and it was related to the contemporary economic situation (KUNISZ 1984: 91 ff.); BODZEK 2015: 121–122.

⁵² ZAPOLSKA 2014: 109–110.

also discovered on seven other sites.⁵³ The number of such artefacts with similar chronology was usually small and did not exceed 5 items. Taking into account the lack of Republic coins in the 2nd- and 3rd-century hoards from this area, we can assume that this denarius could have arrived here even in the 1st century BC, although even a later date is possible.⁵⁴ Its condition indicates a long circulation, which is quite characteristic for Republican coins found in settlements.⁵⁵

The chronology of use for the Przeworsk culture settlement is also marked by the metal garment elements. The existence of the settlement in the Late Pre-Roman Period – apart from the numerous series of pottery vessels – is confirmed by a fragment of the a 65 fibula (Pl. 5, Fig. 2). This type, sometimes referred to as *Knotenfibeln* in German literature, is one of the main distinguishing features of stage LT D1b, parallel to the Gallic War.⁵⁶ In the Przeworsk culture chronology, this period corresponds roughly to the end of stage A2 and the transitional stage A2/A3.⁵⁷ A 65 fibulae mark the latest phase of the use of oppida in Bohemia and Moravia,⁵⁸ as well as the latest settlement horizon for the thoroughly tested oppidum in Manching, Bavaria.⁵⁹ They are the products of workshops operating mainly in Celtic oppida, therefore the discussed artefact should be considered an import. Mentioned above fibulae are known from at least a dozen or so sites of the Tyniec group, Przeworsk and Oksywie cultures in the Polish territory, most of which are located along the Vistula valley.⁶⁰ Their dissemination clearly shows the main influx of imports from the Celtic world, which have been discovered in the vast areas inhabited by the communities of the Germanic cultural circle.

Another date stamp obtained in Muniakowice is the foot of a bronze fibula (Pl. 5, Fig. 3), which can be categorized as an eye fibula of the so-called Prussian series (A 57–A 61). These artefacts are a distinguishing feature of stage B2a in the

⁵³ Nieprowice, Pińczów district – 2 pcs.; Pełczyńska, Pińczów district – 1 pc.; Jakuszowice, Kazimierza district – 1 pc.; Otałęż, Mielec district – 4 pcs.; Zofipole, Krakow country – 1 pc.; Zagórzyce, Kazimierza district – 5 pcs.; Mielec – 1 pc. (DULĘBA and ROMANOWSKI 2018: 72, further references there).

⁵⁴ *Ibidem*: 72.

⁵⁵ E.g. in Nieprowice, Pińczów district (*Ibidem*: 72).

⁵⁶ FISCHER 1988: 237. In the latest studies of Late La Tène fibulae, such forms (originated in the northern Italy) date back to around 90/70 BC (DEMETZ 1999: 34–35). In the alternative chronological system developed for Western and Central Europe, type a 65 is the leading form of stage LT D2a (RIECKHOFF 2008), but it is worth noting that despite the shift in the relative chronology stages, the absolute dating of most leading forms was not changed drastically. The periodization systems developed by A. Miron and S. Rieckhof are difficult to adapt to the area of Central Europe, especially to the areas of contemporary Poland, therefore it still seems justified to use the “old” chronology based on the works of J. Waldhauser, F. Fischer and R. Gebhard.

⁵⁷ DĄBROWSKA 1988: 57–59.

⁵⁸ WALDHAUSER 1983.

⁵⁹ GEBHARD 1991: 13–14, 101–104, Fig. 42.

⁶⁰ DĄBROWSKA 1996: Fig. 2; MACIAŁOWICZ 2015: 282–285, Fig. 9.

relative chronology developed for the Przeworsk culture.⁶¹ The Prussian series is known from almost the entire area inhabited by the Przeworsk culture population, but their greatest concentration is recorded in northern and eastern Mazovia.⁶² Another bronze fibula from this site, with its bow decorated with silver wire, can be dated similarly (Pl. 5, Fig. 4). It represents the so-called trumpet type, group II in T. Liana's classification,⁶³ and is also relatively often found in the Przeworsk culture sites.

The set of ceramic forms of the Przeworsk culture obtained during the surface survey in Muniakowice fits the chronological framework defined by the metal artefacts discovered. None of the relatively large set of 128 fragments was wheel-made. Taking into account the specificity of the regional settlement, this confirms that the place was abandoned in the Late Roman Period, when wheel-made ceramics appeared on a mass scale in all Lesser Poland settlements. The pottery characteristic of the Late Pre-Roman Period is definitely dominant among the fragments from Muniakowice. Pots and bowls are the most numerous, with thick, sometimes also faceted rims (Pl. 5, Fig. 6; Pl. 6, Figs. 1, 5, 16, 25, 33). Fragments of barrel-shaped pots (Pl. 5, Fig. 13) are also present, similarly to the slightly younger pots with a cylindrical, vertical neck (Pl. 6, Fig. 13). Blackened ceramics appear among vessels from the Late Pre-Roman Period, including a fragment of a characteristic engraved mug (Pl. 5, Fig. 5). A bowl fragment with a vertical and strongly thickened rim and a horizontal handle (Pl. 6, Fig. 42) is less typical. Vessels with such handles are rarely discovered, but they are not a precise chronological marker, as evidenced by specimens found in well-dated burials.⁶⁴ Pottery typical of the Early Roman Period is mainly represented by s-shaped pot fragments (Pl. 6, Figs. 17–21, 34, 39).

The archaeological context presented above suggests that the republican denarius found in Muniakowice may have reached the *Barbaricum* before the mass appearance of Roman coins in this area.

CONCLUSIONS

For the entire Przeworsk culture, the share of Roman coins found in settlements is about 10%.⁶⁵ This value is dominated by finds from Lesser Poland (181 items),⁶⁶ but that

⁶¹ LIANA 1970: 442.

⁶² ANDRZEJOWSKI 2001: 61, Fig. 2.

⁶³ LIANA 1970: 443.

⁶⁴ DĄBROWSKA 2008: 69.

⁶⁵ CIOŁEK 2009: 154. This number is certainly higher today. The author states it is 160 coins, also cited by ROMANOWSKI 2012b: 71.

⁶⁶ The basis for these calculations are the inventories presented in KUNISZ 1985 and DYMOWSKI 2011 and the finds from Jakuszowice, Kazimierza district; Pełczyska, Pińczów district (a dozen unpublished coins from this site was not included); Nieprowice, Pińczów district; Zagórzycze, Kazimierza district; Aleksandrowice, Krakow district and 10 coins included in this study. The analyzes did not take into account the finds from the Lublin region, due to the slightly different cultural situation of these lands in the Roman Period.

is due to the abundant and well-recognized material from several settlements, mainly from Jakuszowice, Kazimierza district, but also from Pełczyska and Nieprovice in Pińczów district.⁶⁷ The few coins covered by this study do not allow for detailed statistical analyzes of the chronological distribution. However, even this small set shows trends known from other monetary finds in Lesser Poland settlements:⁶⁸

- small representation of Republican coins – 4.9% (new finds – 11.1%);
- no coins of the Julio-Claudian dynasty;
- presence of Flavian coins more clearly marked – 4.4% (new finds – 11.1%);
- Antonine coins constitute the majority – 72.3% (new finds – 66.6%);
- few later, 3rd- and 4th-century coins – 9.9% (new finds – 11.1%).

Despite the lack of Antoninus Pius coins in the described material – the ruler most frequently represented in Lesser Poland settlements,⁶⁹ it can be stated that the newly discovered coins fit the model known for this type of artefacts (Pls. 8–9, Chart 1 (parts 1–2); Pl. 10, Chart 2). Therefore, it can be assumed that the actual relations to other find categories – hoards and stray finds – are similar to the previously known patterns from this area.⁷⁰ The chronological structure we can observe in this small set of newly discovered coins is somewhat reminiscent of the situation known from Silesian settlements.⁷¹ In the light of the coins discussed in this article, a relatively small sample of 16 coins known from that area⁷² may indicate that the monetary material discovered so far represents only a fragment of the complete image. However, it should be noted that it fits into the general chronology of the Roman coins influx in the region⁷³ primarily the beginning of the 3rd century AD, which is also the time of the largest influx of Roman coins on the territory of Poland in general.⁷⁴ As for the 2nd-century AD denarii, the influx time of Hadrian's denarius from Kościejów could be discussed, which, in the light of known findings, could have arrived in Poland earlier – in the fourth decade of the 2nd century AD.⁷⁵ In turn,

⁶⁷ Finds from settlements account for about 2.1% of all Roman coin finds from Lesser Poland (except for the Lublin region). Therefore, it should be assumed that the indicator for the entire Przeworsk culture will be different than the one provided by CIOŁEK 2009. This may be due to the fact that the author does not take into account the latest discoveries, which mainly include stray artefacts and hoards, which changes the proportions between the categories of finds.

⁶⁸ ROMANOWSKI 2017: 941; DULĘBA and ROMANOWSKI 2018: 73.

⁶⁹ *Ibidem*: 75.

⁷⁰ For a detailed analysis of the finds from Lesser Poland and their mutual relations, see: ROMANOWSKI 2017: 941; DULĘBA and ROMANOWSKI 2018: 73–77.

⁷¹ ROMANOWSKI 2012b: 74.

⁷² Found on 15 sites (*Ibidem*: 71).

⁷³ ROMANOWSKI 2012b: 74–75; DULĘBA and ROMANOWSKI 2018: 77.

⁷⁴ I.a. BURSCHE 2004: 195–205; more on the topic in DYMOWSKI 2013.

⁷⁵ DYMOWSKI 2013: 105; DYMOWSKI and MYZGIN 2014: 48; ROMANOWSKI 2014: 36.

the Republican denarius from Muniakowice could have reached the Lesser Poland settlement even in the 1st century BC, which also finds its analogies in other areas.⁷⁶ The last element of the discussed set of coins is the AE from Przemęczany, which could appear there as a manifestation of the horizon of this type of finds from stage C2 – the second half of the 3rd century AD.⁷⁷ Varied state of preservation and other physical features indicate different coin circulation time within the settlements, which may also indicate a different usage or function. The nominal value structure also does not differ significantly from other Lesser Poland settlements. Although the percentage of particular denominations varies depending on the case, the basic proportions are generally maintained, with a very clear predominance of denarii.⁷⁸ The same applies to the presence of subaerats and the percentage of bronze coins (Pl. 11, Charts 3–4).⁷⁹

All the newly discovered coins are loose finds, discovered in the humus layer. Since there is no possibility of linking them to a specific context, their physical features may help in determining their function within the settlement, which applies particularly to the bronze of Trajan Decius from AD 249–251 found in Przemęczany. Its intentional division may be a trace of a periodic metallurgist presence in the settlement, or of a permanent workshop probably operating in stage C2 whose relics have not yet been located. In the context of functionality, one should also mention the Hadrian denarius from AD 134–138 found in Kościejów. This coin, also partially preserved, indicates its possible prestigious function as a pendant⁸⁰ and its possible deposition in a hearth or furnace.⁸¹

CATALOGUE⁸²

SUDÓŁ, Pińczów district

1. *Roman Empire*, Titus, denarius, AD 79, minted: Rome (Pl. 7, Fig. 1)

Obv.: wreathed head of emperor right; [IMP TIT]VSCAESVESPASIANAVGP[M]

Rev.: Capricorn left, below globe; TRPVIII[IMPXIII] COSVII

RIC 9; 2.26 g; 16.5 × 18 mm; axis: ↑↘; condition: average

Deep scratching of the *Obv.*

⁷⁶ ROMANOWSKI 2010: 37; 2012b: 73; DYMOWSKI and ROMANOWSKI 2017: 180.

⁷⁷ BURSCHE, KACZANOWSKI and RODZIŃSKA-NOWAK 2000: 118.

⁷⁸ Opatkowice – 72.2% of all coins, Pełczyska – 72.7%, Jakuszowice – 93.5%, Nieprawice – 97.0% (DULĘBA and ROMANOWSKI 2018: 77–79).

⁷⁹ Subaerats: Pełczyska 18.2% of all coins, Nieprawice – 21.2%, Aleksandrowice – 25.0%, Jakuszowice – 23.8%. AE: Pełczyska – 4.5%, Jakuszowice – 6.5% (DULĘBA and ROMANOWSKI 2018: 78–79).

⁸⁰ Known from Lesser Poland settlements (DULĘBA and ROMANOWSKI 2018: 80).

⁸¹ See above. Also see DULĘBA and ROMANOWSKI 2018: 80.

⁸² Catalogue entries and descriptions prepared by: Andrzej Romanowski and Tomasz Więcek.

2. Roman Empire, Trajan, denarius, AD 103–111, minted: Rome (Pl. 7, Fig. 2)*Obv.*: wreathed head of emperor right; IM[P TRAIANO]AVGGERDACPMPTRP*Rev.*: Victory left, standing, holding palm branch in l. hand and wreath in r.; [CO] SVPPSPQROPTIMOPRINC

RIC 128; 2.64 g; 16 × 19 mm; axis: ↑↓; condition: average

Dark patina partially on *Obv.* Metal bulging and corrosion spots under a layer of silver on both sides. Numerous small scratches visible on both sides.**3. Roman Empire, Trajan, denarius, AD 114–117, minted: Rome (Pl. 7, Fig. 3)***Obv.*: wreathed and draped bust of the emperor right;

IMPCAESNERTRAIANOPTIMAVGGERDACPARTHICO.

Rev.: Providentia standing left, elbow on the column, holding scepter, other hand pointing the globe in front. On sides: PRO-VID; PMTRPCOS VIPPSP QR

RIC 364; 3.03 g; 18 mm; axis: ↑↓; condition: average

Highly porous *Obv.* Numerous small scratches visible on both sides.**4. Roman Empire, Hadrian, denarius (subaerate), AD 125–128, minted: Rome (Pl. 7, Fig. 4).***Obv.*: wreathed head of emperor right; [HA]DR[I]ANVS AVGV[S]TVS*Rev.*: Victory left, holding wreath in outstretched r. hand, l. along the body. Globe in exergum?; [COS] III

RIC 183 or 184; 2.25 g; 17 mm; axis: ↑↓; condition: bad

Aenima – only bronze core preserved, with faint traces of silvering (?). Corrosion spots on both sides.**5. Roman Empire, Hadrian, denarius, AD 134–138, minted: Rome (Pl. 7, Fig. 5)***Obv.*: wreathed head of emperor right; [HADRI]ANVS AVGCO[S]IIPP*Rev.*: Salus right, standing, holding platter in outstretched hand, altar with writhing snake in front; SA[LVS AVG]

RIC 267d; 2.65 g; 18 × 19 mm; axis: ↑↓; condition: bad

Coin badly worn. Metal bulging on both sides. Numerous small scratches on both sides.

6. Roman Empire, Marcus Aurelius (Faustina I), denarius, AD 161–175, minted: Rome (Pl. 7, Fig. 6)*Obv.*: bust of Faustina right, draped; FAVSTINA AVGVSTA*Rev.*: Venus sitting left on throne, holding Victoria with wreath in r. hand, long scepter leaning against the ground in l.; VENVS FELIX

RIC 731; 3.11 g; 18 mm; axis: ↑↓; condition: average

Numerous small scratches on both sides.

MIŁAWCZYCE, Kazimierza district

1. Roman Empire, Commodus, denarius, AD 186, minted: Rome (Pl. 7, Fig. 7)*Obv.*: wreathed head of emperor right; MCOMM A[NTP] FELAVGBRIT*Rev.*: Victoria walking left, holding wreath in r. hand and palm tree in l.; PMTRPXIIM P VIICOSVPP

RIC 122a; 2.39 g; 18 mm; axis: ↑↑; condition: average

KOŚCIEJÓW, Miechów district

1. *Roman Empire*, Hadrian, denarius, AD 134–138, minted: Rome (Pl. 7, Fig. 8)
Obv.: wreathed head of emperor right; HADRIANV[S AVGCOSIIIPP]
Rev.: Hadrian standing left, veiled, draped, makes offering holding plate in r. hand above tripod; VOTAP[VB] LI[CA]
 RIC 290d; 1.82 g, 17 mm; axis: ↓; condition: bad
 Missing coin fragment (approx. 1/3) – right side Obv. Coin exposed to high temperature. Dark, graphite patina on both sides.

MUNIAKOWICE, Krakow district

1. *Roman Republic*, M. Baebius Q.f. Tampilus, denarius, BC 137, minted: Rome (Pl. 7, Fig. 10)
Obv.: helmeted head of Roma left, sign in front: [X], legend in the back bottom up [TAMPIL]
Rev.: Apollo in quadriga right, holding bow, arrows and reins in l. hand, twig in r.
 Below horses: ROM[A]. Exergum: [M·]BAEBI·[Q·F]
 RRC 236/a; 3.45 g; 18 mm; axis: ↑↓; condition: average
 Coin quite badly worn. In the central part of Obv. possibly a punch mark: [(?).

PRZEMĘCZANY, Radziemice commune, Proszowice district, Lesser Poland province

1. *Roman Empire*, Trajan Decius, AE, AD 249–251, minted: Dacia (Pl. 7, Fig. 9)
Obv.: head of emperor right, wreathed, draped, cuirassed; [IMPT]RAIANVS[DECIVSAVG]
Rev.: Pax standing left between lion and eagle, holding twig and scepter with Victoria, in exergum: [ANIII or V]..; [PROVI]IN C IADAC[IA]
 RPC, vol. IX, nos. 94, 95, 100; 89 g; 15 × 26 mm; axis: ↑↑; condition: bad
 Coin fragment (approx. 1/3), very strongly corroded.

ABBREVIATIONS

RIC = H. MATTINGLY, E.A. SYDENHAM, C.H.V. SUTHERLAND, R.A.G. CARSON, P.H. WEBB, J.W.E. PEARCE, P.M. BRUUN and J.P.C. KENT (eds.) *The Roman Imperial Coinage*, vols. I–X, London 1923–1994.

RPC = A. HOSTEIN and J. MAIRAT, *Roman Provincial Coinage*, vol. IX: *From Trajan Decius to Uranus Antoninus (AD 249–254)*, London 2016.

RRC = M.H. CRAWFORD, *Roman Republic Coinage*, Cambridge 1974.

REFERENCES

- ANDRZEJOWSKI, J. 2001. “Wschodnia strefa kultury przeworskiej – próba definicji”, *Wiadomości Archeologiczne* 54: 59–87.
 BODZEK, J. 2015. “Monety rzymskie znalezione w Aleksandrowicach (kompleks stan. 2 i 3), pow. krakowski, woj. małopolskie”. In: J. CHOCHOROWSKI (ed.), *Via Archaeologica. Źródła z badań wykopaliskowych na trasie autostrady A4 w Małopolsce. Od epoki brązu do czasów nowożytnych. Wybrane odkrycia i znaleziska*, Kraków: 115–129.

- BODZEK, J., JELLONEK S. and ZAJĄC, B. 2019. "Roman provincial coins found in Lesser Poland: an overview", *Acta Archaeologica Lodziensia* 65: 51–82. DOI: 10.26485/AAL/2019/65/5
- BEŁKOWSKA, I. 1981. "Napływ dużych rzymskich monet brązowych na ziemię polskie w I–III w. n.e.", *Wiadomości Numizmatyczne* 25 (3–4): 121–153.
- BURSCHE, A. 1997. "Roman Coinage from Jakuszowice Settlement in North Małopolska", *Notae Numismatae – Zapiski Numizmatyczne* 2: 119–157. DOI: 10.11588/diglit.21229.12
- BURSCHE, A. 1999. "Znane i nieznanne znaleziska denarów rzymskich z ziem polskich", *Wiadomości Numizmatyczne* 43 (1–2): 115–135.
- BURSCHE, A. 2004. "Dalsze monety ze skarbu w Liwie, powiat Węgrów. Trzeciowieczne denary na terenach Barbaricum". In: W. KACZANOWICZ (ed.), *Studia z dziejów antyku. Pamięci Profesora Andrzeja Kunisza*, Katowice: 192–205.
- BURSCHE, A. 2010. "Monety rzymskie z Illerup Ådal". In: A. URBANIAK, R. PROCHOWICZ, I. JAKUBCZYK, M. LEVADA and J. SCHUSTER (eds.), *Terra Barbarica. Studia ofiarowane Magdalenie Mączyńskiej w 65. rocznicę urodzin*, Monumenta Archaeologica Barbarica, Series Gemina, vol. II, Łódź–Warszawa: 197–209.
- BURSCHE, A. 2011. *Illerup Ådal. Die Münzen*, vol. 14, Moesgård.
- BURSCHE, A., KACZANOWSKI, P. and RODZIŃSKA-NOWAK, J. 2000. "Monety rzymskie z Jakuszowic". In: R. MADYDA-LEGUTKO and T. BOCHNAK (eds.), *Superiores barbari. Księga pamiątkowa ku czci Profesora Kazimierza Godłowskiego*, Kraków: 101–130.
- CIOŁEK, R. 2001. *Katalog znalezisk monet rzymskich na Pomorzu*, Warszawa.
- CIOŁEK, R. 2009. "Znaleziska monet rzymskich na Śląsku. Wnioski z nowego inwentarza", *Wiadomości Numizmatyczne* 53 (2): 146–182.
- CZARNECKA, K. 2001. "Cmentarzysko kultury przeworskiej w Oblinie, gm. Maciejowice, woj. mazowieckie", *Wiadomości Archeologiczne* 54: 89–100.
- DĄBROWSKA, T. 1988. *Wczesne fazy kultury przeworskiej. Chronologia – zasięg – powiązania*, Warszawa.
- DĄBROWSKA, T. 1996. "Frühe Stufen der Przeworsk-Kultur. Bemerkungen zu den Kontakten mit Südeuropa". In: Z. WOŹNIAK (ed.), *Kontakte längs der Bernsteinstraße (zwischen Caput Adriae und den Ostseegebieten) in der Zeit um Christi Geburt*, Kraków: 127–141.
- DĄBROWSKA, T. 2008. *Młodszy okres przedrzymski na Mazowszu i zachodnim Podlasiu. Zarys kulturowo-chronologiczny*, Materiały Starożytne i Wczesnośredniowieczne 7, Warszawa.
- DEMETZ, S. 1999. *Fibeln der Spätlatène- und frühen römischen Kaiserzeit in den Alpenländern*, Frühgeschichtliche und Provinzialrömische Archäologie 4, Rahden.
- DOBRZAŃSKA, H. 1980. "Zagadnienie datowania ceramiki toczonej w kulturze przeworskiej", *Archeologia Polski* 24: 87–152.
- DOBRZAŃSKA, H. 1997. "Kultura przeworska w okresie rzymskim". In: K. TUNIA (ed.), *Z archeologii Małopolski. Historia i stan badań zachodniomałopolskiej wyżyny lessowej*, Kraków: 331–382.
- DOBRZAŃSKA, H. 2008. "Zagadnienie dużych ośrodków produkcji ceramiki szarej w środkowoeuropejskim Barbaricum: przypadek Zofipola k. Krakowa". In: A. BŁAŻEJEWSKI (ed.), *Ceramika warsztatowa w środkowoeuropejskim Barbaricum*, Wrocław: 175–203.
- DULĘBA, P. and ROMANOWSKI, A. 2018. "Rzymskie monety z osady w Nieprowicach, pow. pińczowski, w świetle danych archeologicznych", *Wiadomości Numizmatyczne* 62 (1–2): 61–99. DOI: 10.24425/wn.2018.125037
- DYMOWSKI, A. 2011. *Znaleziska monet rzymskich z terenu Polski rejestrowane w pierwszych latach XXI wieku. Aspekty źródłoznawcze*, Zielona Góra.

- DYMOWSKI, A. 2013. "Chronologia napływu denarów rzymskich z I–III wieku na ziemię Polski w świetle analizy nowego materiału ze znalezisk drobnych", *Wiadomości Numizmatyczne* 57 (1–2): 93–149.
- DYMOWSKI, A. 2016. *Nummi serrati, bigati et alii. Coin of the Roman Republic in East-Central Europe North of the Sudetes and the Carpathians*, Warszawa.
- DYMOWSKI, A. and MYZGIN, K. 2014. "Inflow and Redistribution of Roman Imperial Denarii in the Area of the Przeworsk, Wielbark and Chernyakhiv Cultures and in the Baltic Islands in the Light of Chronological Structure of Coin Hoards", *Notae Numismaticae – Zapiski Numizmatyczne* 9: 39–69. DOI: 10.11588/digit.31073.8
- DYMOWSKI, A. and ROMANOWSKI, A. 2017. "Finds of Roman Republican coins from the Przeworsk culture settlement concentration in the middle Prosna drainage", *Numismatický sborník* 31 (2): 176–185.
- DYMOWSKI, A. and RUDNICKI, M. 2012. "Kujawskie znaleziska monet antycznych. Nowe źródła do dziejów pieniądza na ziemiach Polski w starożytności", *Biuletyn Numizmatyczny* 4 (368): 241–258.
- FISCHER, F. 1988. "Südwestdeutschland im letzten Jahrhundert vor Christi Geburt. Anmerkungen zum Forschungsstand der Spätlatenzzeit". In: D. PLANCK and A. WAIS (eds.), *Archäologie in Württemberg*, Stuttgart: 235–250.
- GEBHARD, R. 1991. *Die Fibeln aus dem Oppidum von Manching*, Ausgrabungen in Manching 14, Stuttgart.
- GODŁOWSKI, K. 1977. "Materiały do poznania kultury przeworskiej na Górnym Śląsku (część II)", *Materiały Starożytne i Wczesnośredniowieczne* 4: 7–234.
- GODŁOWSKI, K. 1981. "Kultura przeworska". In: J. WIELOWIEJSKI (ed.), *Prahistoria ziem polskich*, vol. V, Wrocław–Warszawa–Kraków–Gdańsk: 57–135.
- GRYGIEL, M., PIKULSKI, J. and TROJAN, M. 2009. "The research on the multicultural site no. 1 in Zagórzycze com. and distr. Kazimierza Wielka, voiv. Świętokrzyskie during the years 2003 to 2004", *Recherches Archéologiques SN* 1: 199–275.
- GRYGIEL, M., PIKULSKI, J. and TROJAN, M. 2010. "Przyczynki do poznania przemian osadniczo-kulturowych u schyłku starożytności w rejonie wielokulturowej osady na stanowisku 2 w Jakuszowicach", *Światowit* 8 (49): 89–99.
- HORSNÆS, H.W. 2006. "Roman bronze coins from Barbaricum – Denmark as a case study". In: H.W. HORSNÆS and J.Ch. MOESGAARD (eds.), *Single Finds, the Nordic Perspective. Proceedings of the Seminar in Copenhagen 23–24 November 2001*, Nordisk Numismatisk Årsskrift 2000–2002, Copenhagen: 53–99.
- KACZANOWSKI, P. 1987. *Drochlin. Ciałopalne cmentarzysko kultury przeworskiej z okresu wpływów rzymskich*, ZNUJ – Prace Archeologiczne 40, Kraków.
- KORDECKI, J. and OKOŃSKI, J. 1999. „Mikroregion osadniczy na prawobrzeżu dolnego biegu Raby”. In: S. CZOPEK and A. KOKOWSKI (eds.), *Na granicach antycznego świata: sytuacja kulturowa w południowo-wschodniej Polsce i regionach sąsiednich w młodszym okresie przedrzymskim i okresie rzymskim: materiały z konferencji, Rzeszów, 20–21 XI 1997*, Rzeszów: 181–215.
- KUNISZ, A. 1984. *Pieniądz zastępczy i jego rola w ekonomice państwa rzymskiego w początkach Cesarstwa (27 r. p.n.e. – 68 r. n.e.)*, Katowice.
- KUNISZ, A. 1985. *Znaleziska monet rzymskich z Małopolski*, Wrocław–Warszawa–Kraków.
- KOSSACK, G. 1962. "Frühe römische Fibeln aus dem Alpenvorland und ihre chronologische Bedeutung für die Germanischen Kulturverhältnisse". In: J. WERNER (ed.), *Aus Beyerns Frühzeit. Fridrich Wagner zum 75 Geburtstag*, Schriftenreihe zur Bayerischen Landesgeschichte 62, München: 125–137.

- LIANA, T. 1970. "Chronologia względna kultury przeworskiej we wczesnym okresie rzymskim", *Wiadomości Archeologiczne* 35: 429–491.
- MACIAŁOWICZ, A. 2015. "Handwerk, Handel und Heirat? Neues über Kontakte der Boier mit den Germanen anhand von Fibelfund". In: M. KARWOWSKI, V. SALAČ and S. SIEVERS (eds.), *Boier zwischen Realität und Fiktion*, Kolloquien zur Vor- und Frühgeschichte 21, Bonn: 273–293.
- POLESKA, P. 1986. "Osada grupy tynieckiej na stan. 1 w Przemęczanach, woj. krakowskie", *Materiały Archeologiczne* 23: 135–182.
- POLESKA, P. 2006. *Celtycki mikroregion osadniczy w rejonie podkrakowskim*, Biblioteka Muzeum Archeologicznego w Krakowie 2, Kraków.
- RIECKHOFF, S. 2008. "Geschichte der Chronologie der Späten Eisenzeit in Mitteleuropa und das Paradigma der Kontinuität", *Leipziger online – Beiträge zur Ur- und Frühgeschichtlichen Archäologie* 30: 1–11.
- ROCZKALSKI, B. and WŁODARCZAK, P. 2011. "Badania wykopaliskowe przeprowadzone w latach 2005–2006 na stanowisku 4 w Łysokaniach oraz na stanowisku 33 w Brzeziu". In: S. KADROW (ed.), *Raport 2005–2006*, Warszawa: 359–369.
- RODZIŃSKA-NOWAK, J. 2006. *Jakuszowice, stanowisko 2. Ceramika z osady kultury przeworskiej z młodszego i późnego okresu wpływów rzymskich i wczesnej fazy okresu wędrówek ludów*, ZNUJ – Prace Archeologiczne 61, Kraków.
- ROMANOWSKI, A. 2008. *Die Fundmünzen der Römischen Zeit in Polen. Rechtsufriges Masowien und Podlachien*, Collection Moneta 84, Wetteren.
- ROMANOWSKI, A. 2010. "Dolina środkowej Proсны w świetle znalezisk monet rzymskich". In: S. SUCHODOLSKI and M. ZAWADZKI (eds.), *Od Kalisii do Kalisza. Skarby doliny Proсны. Katalog wystawy*, Warszawa: 29–41.
- ROMANOWSKI, A. 2012a. "Możliwości interpretacyjne znalezisk monet rzymskich z osad (na przykładzie osady kultury przeworskiej w Kaliszu-Piwonicach)", *Numismatický sborník* 26 (1): 81–90.
- ROMANOWSKI, A. 2012b. "Znaleziska monet rzymskich z osad kultury przeworskiej na Śląsku". In: W. GARBACZEWSKI and R. MACYRA (eds.), *Pieniądz i banki na Śląsku*, Poznań: 69–84.
- ROMANOWSKI, A. 2014. "Skarb denarów rzymskich z miejscowości Słochy Annapolskie, gm. Siemiatycze, pow. siemiatycki. Uwagi do chronologii napływu skarbów denarów rzymskich na ziemię polskie", *Folia numismatica* 28 (1): 35–41.
- ROMANOWSKI, A. 2017. "Roman coin finds from Przeworsk Culture settlements in Lesser Poland (Małopolska)". In: M. CACCAMO CALTABIANO, B. CARROCCIO, D. CASTRIZIO, M. PUGLISI and G. SALAMONE (eds.), *XV International Numismatic Congress Taormina 2015. Proceedings*, vol. I, Roma–Messina: 941–945.
- RUDNICKI, M. 2007. "Importy rzymskie z Pełczysk". In: E. DROBERJAR (ed.), *Archeologie Barbarů 2006 Sborník příspěvků z II. protohistorické konference, České Budějovice 21.–24. 11. 2006*, České Budějovice: 93–112.
- RUDNICKI, M. 2014. "Jakuszowice, gm. Kazimierza Wielka, pow. kazimierski", *Wiadomości Numizmatyczne* 58 (1–2): 276–278.
- SZPUNAR, A. and DULĘBA, P. 2009. "Einmaliger Import aus Noricum gefunden in der Siedlung in Pasieka Otfinowska, powiat Tarnów", *Acta Archaeologica Carpathica* 42–43: 109–139.
- WALDHAUSER, J. 1983. "Závěrečný horizont keltských oppid v Čechách (Konfrontace výkladu historických pramenů, numismatiky a archeologie)", *Slovenská Archeologia* 31: 325–356.
- WAWRZENIECKI, M. 1908. "Poszukiwania archeologiczne w Królestwie Polskim", *Materiały Antropologiczno-Archeologiczne i Etnograficzne* 10: 46–98.

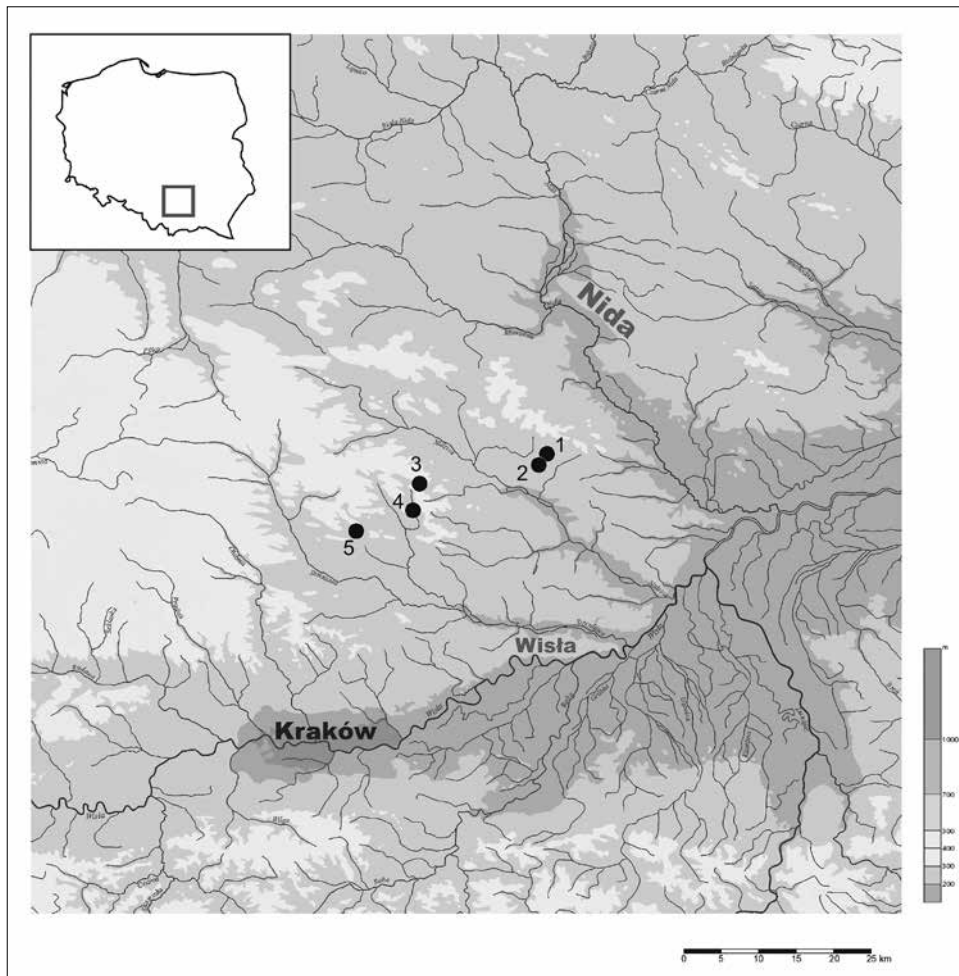
- WAWRZENIECKI, M. 1912. "Poszukiwania zabytków przedhistorycznych w Królestwie Polskim", *Materiały Antropologiczno-Archeologiczne i Etnograficzne* 12: 34–52.
- ZAPOLSKA, A. 2013. "The influx of Roman Coins to the West Balt Culture Environment", *Notae Numismaticae – Zapiski Numizmatyczne* 8: 105–123. DOI: 10.11588/diglit.31072.13
- ZAPOLSKA, A. 2014. "The Coins from the Goldsmith Hoard of Frombork Reconsidered", *Notae Numismaticae – Zapiski Numizmatyczne* 9: 95–116. DOI: 10.11588/diglit.31073.10

Authors' addresses:

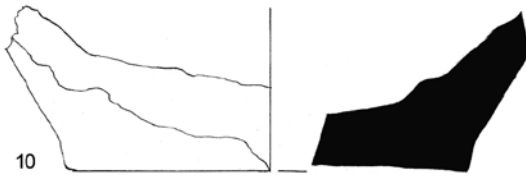
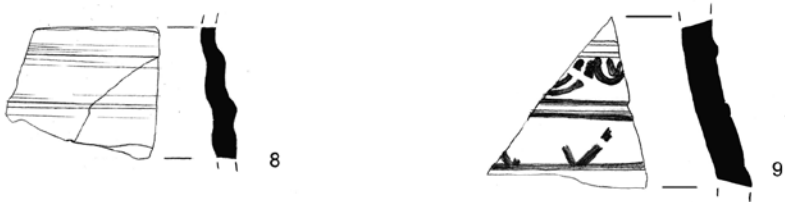
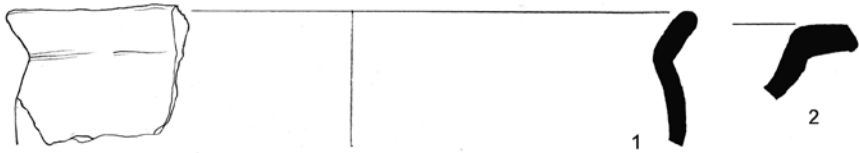
Przemysław Dulęba
University of Wrocław, Institute of Archaeology
48 Szewska Street, 50-139 Wrocław, Poland
przemdul@gmail.com

Andrzej Romanowski
National Museum in Warsaw, Department of Coins and Medals
3 Al. Jerozolimskie, 00-495 Warsaw, Poland
aromanowski@mnw.art.pl

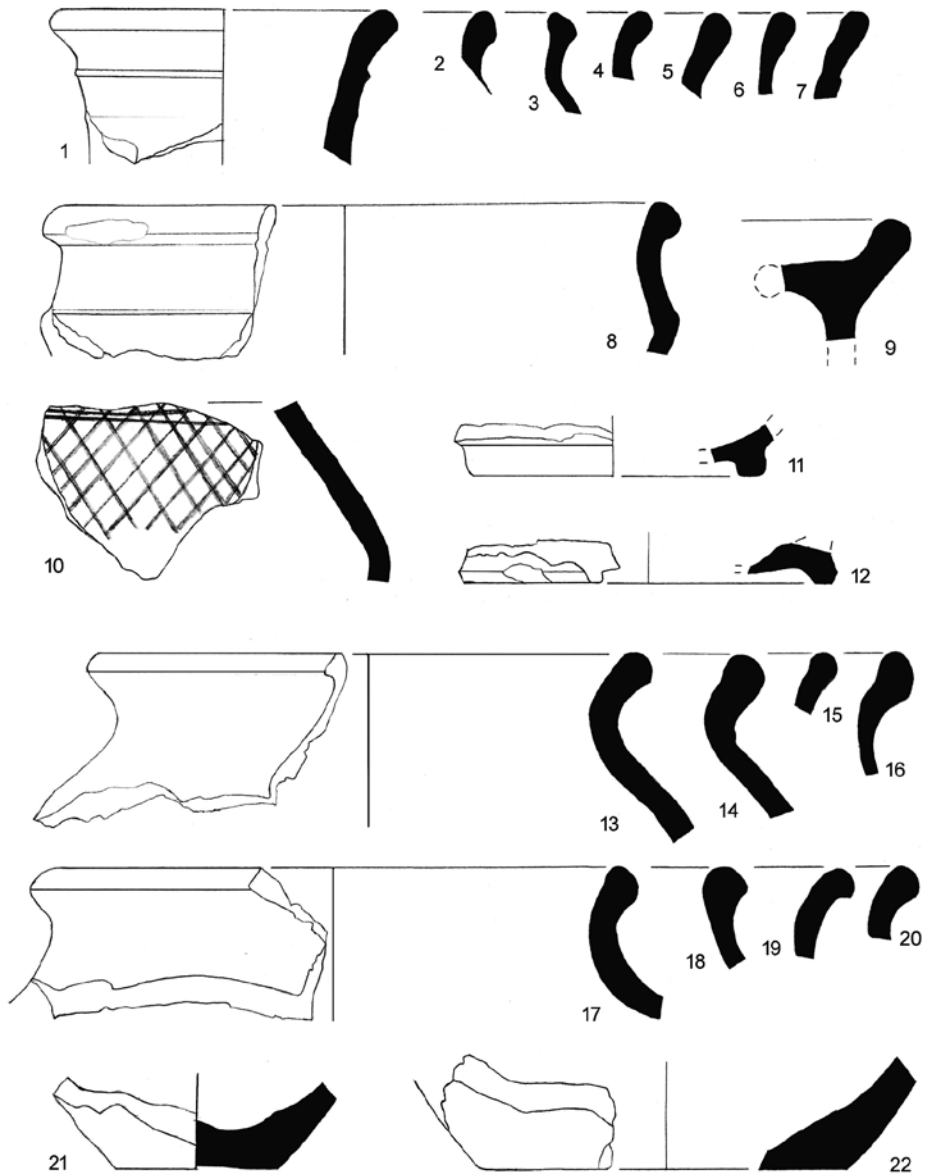
MAP 1	Sites with new finds of Roman coins from the area of Western Lesser Poland (prepared by P. Dulęba and P. Martyński)
PLATE 1	Sudół. 1–6) hand -made ceramics; 7–16) wheel-made ceramics (drawing by P. Dulęba)
PLATE 2	Sudół. Wheel-made ceramics (drawing by P. Dulęba)
PLATE 3	Miławczyce. 1) iron and bronze; 2–3, 5) bronze; 4) clay; 6) silver (drawing by J. Bernacki); 7–15: hand-made ceramics (drawing by P. Dulęba)
PLATE 4	Miławczyce. Hand-made ceramics (drawing by P. Dulęba)
PLATE 5	Kościejów. 1) bronze (drawing by J. Bernacki). Muniakowice. 2–3) bronze; 4) bronze and silver (drawing by J. Bernacki); 5–13) hand-made ceramics (drawing by P. Dulęba)
PLATE 6	Muniakowice. Hand-made ceramics (drawing by P. Dulęba)
PLATE 7	Roman coins: 1–6) Sudół; 7) Miławczyce; 8) Kościejów; 9) Przemęczany; 10) Muniakowice (photo by P. Dulęba)
PLATE 8–9	Chart 1 (parts 1–2). Roman coins found in the Przeworsk culture settlements in Lesser Poland (prepared by A. Romanowski)
PLATE 10	Chart 2. Number of new finds from the Przeworsk culture settlements in Lesser Poland (prepared by A. Romanowski)
PLATE 11	Chart 3. Nominal value structure of the new finds from the Przeworsk culture settlements in Lesser Poland (prepared by A. Romanowski) Chart 4. Nominal value structure of the finds from the Przeworsk culture settlements in Lesser Poland (prepared by A. Romanowski)



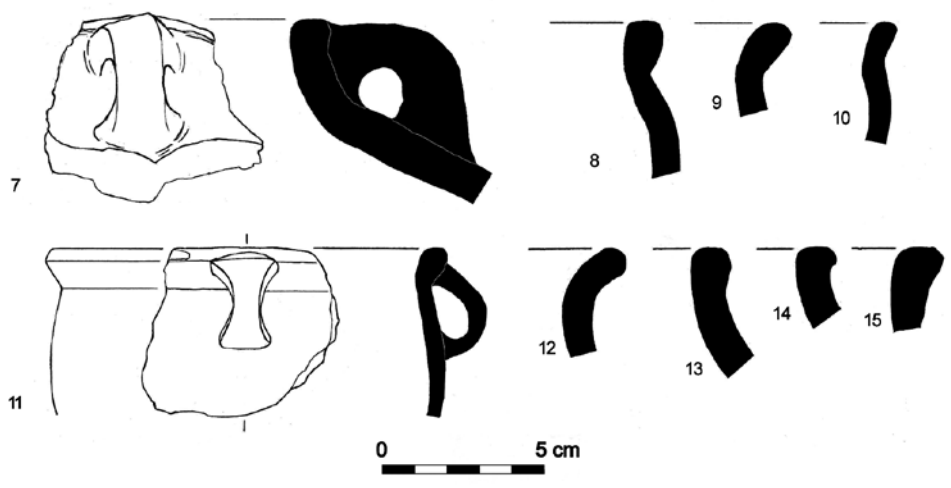
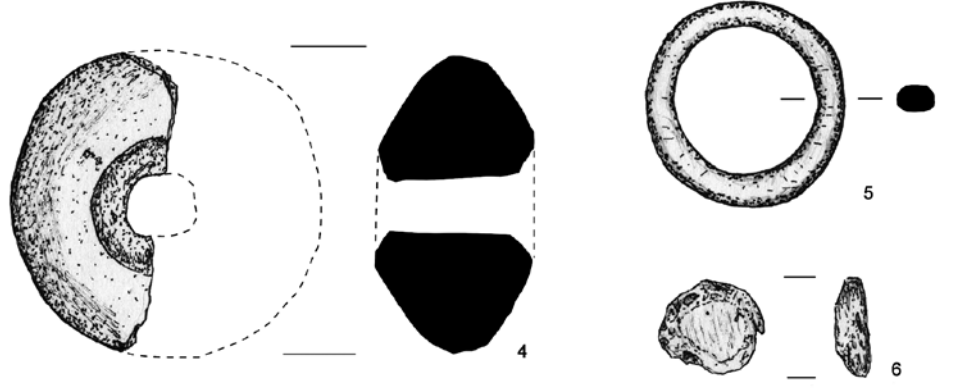
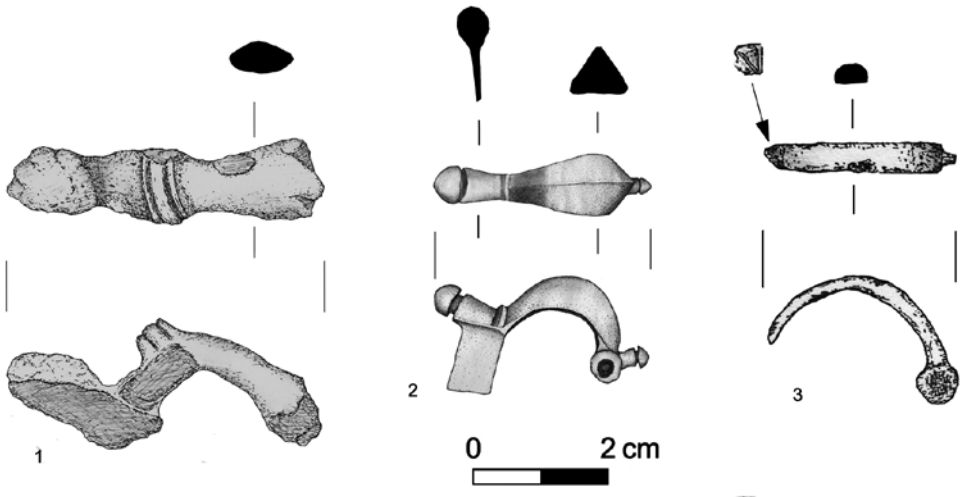
Map 1. Sites with new finds of Roman coins from the area of Western Lesser Poland: 1) Sudół; 2) Miławczyce; 3) Kościejów; 4) Przemęczany; 5) Muniakowice (prepared by P. Dulęba and P. Martyński)

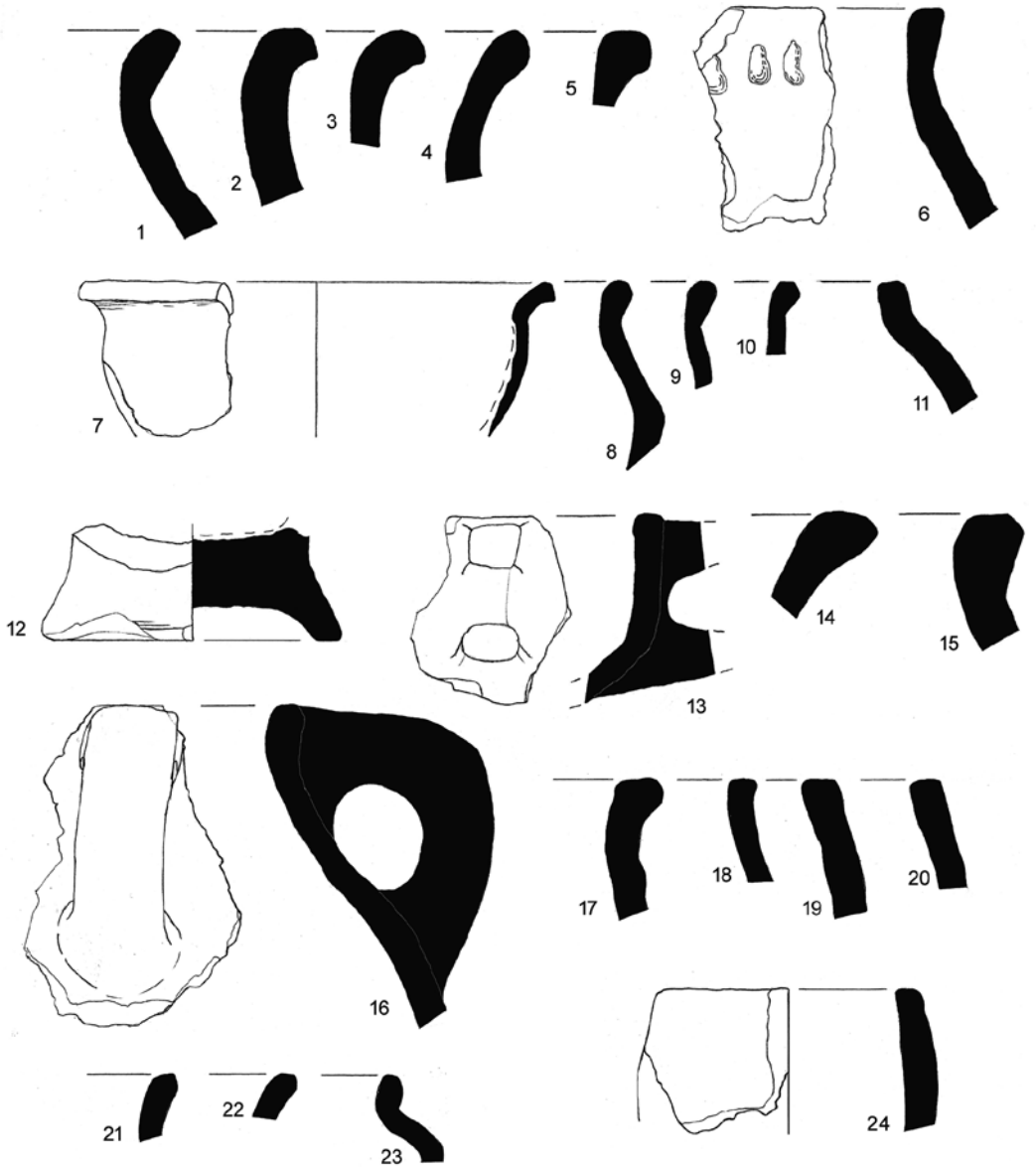


0 5 cm

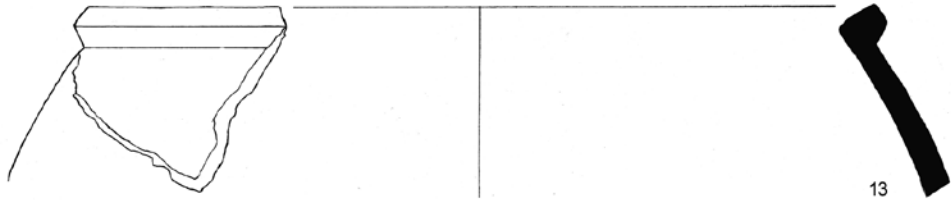
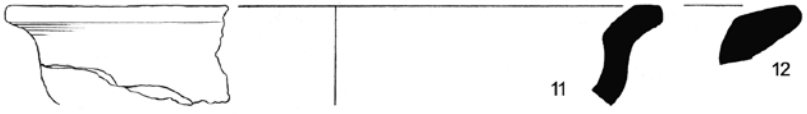
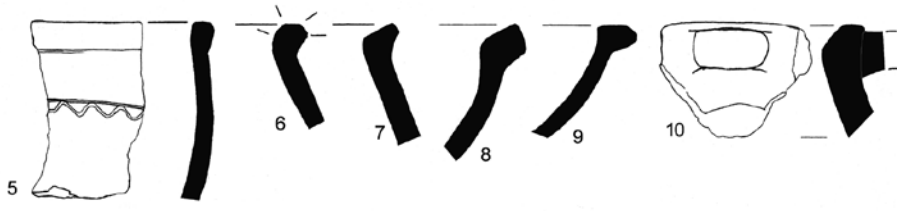
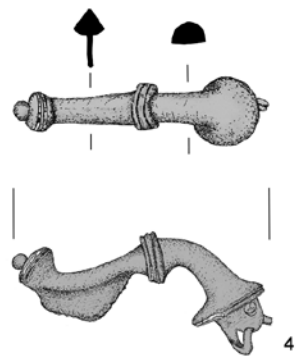
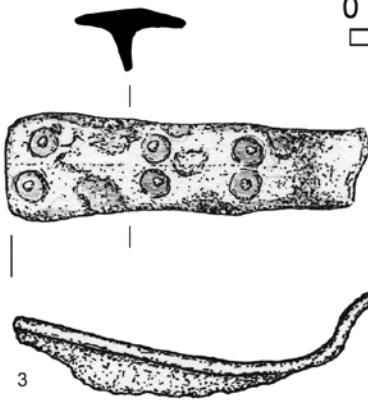
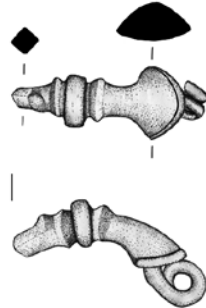


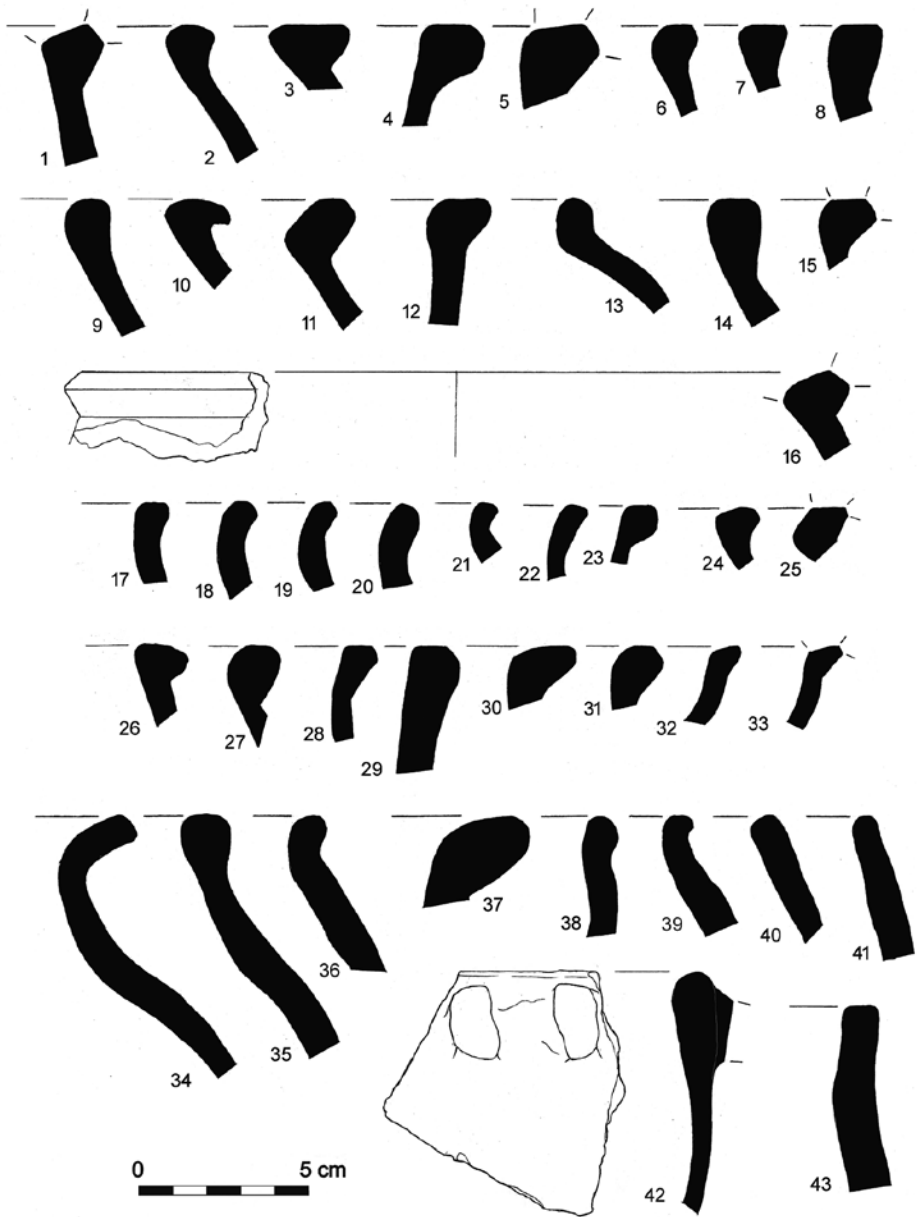
0 5 cm

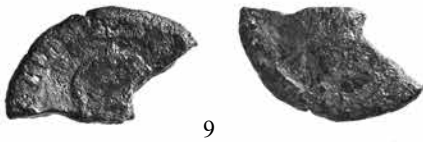




0 5 cm







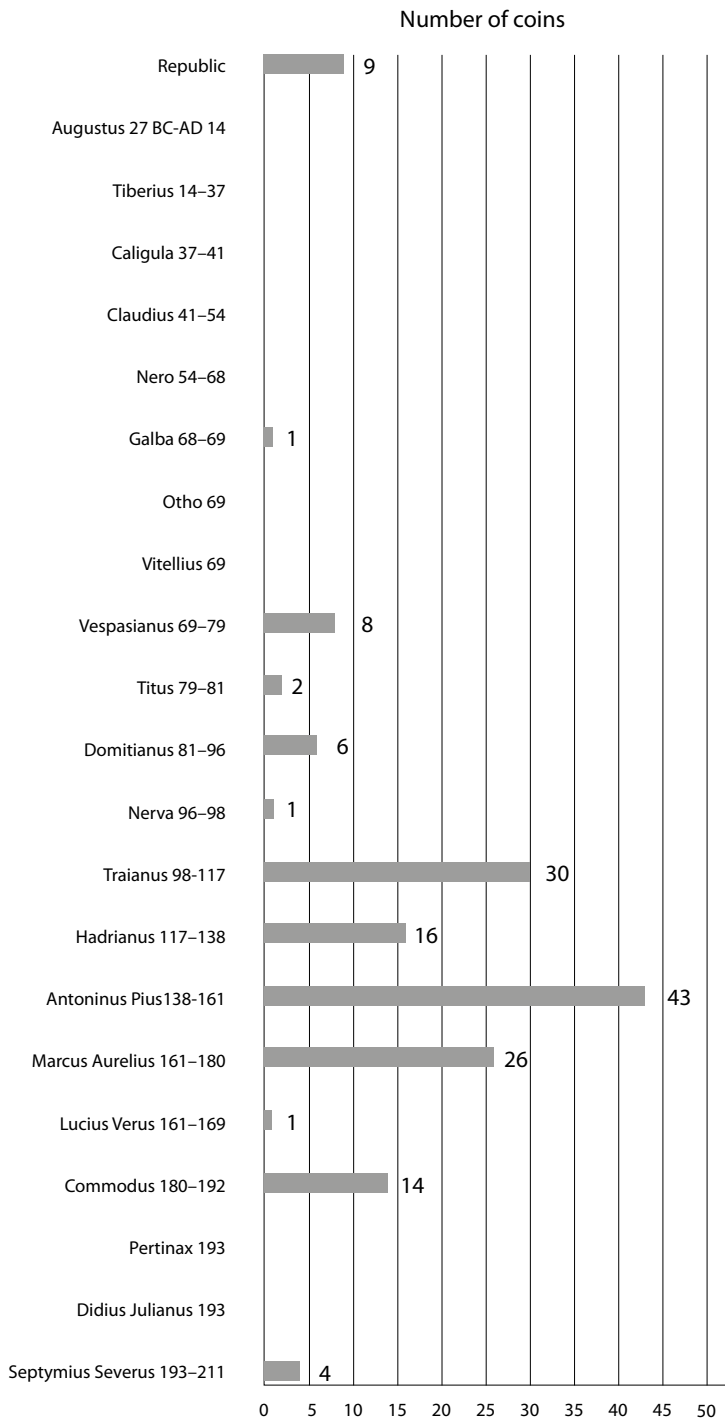


Chart 1 (part 1). Roman coins found in the Przeworsk culture settlements in Lesser Poland (prepared by A. Romanowski)

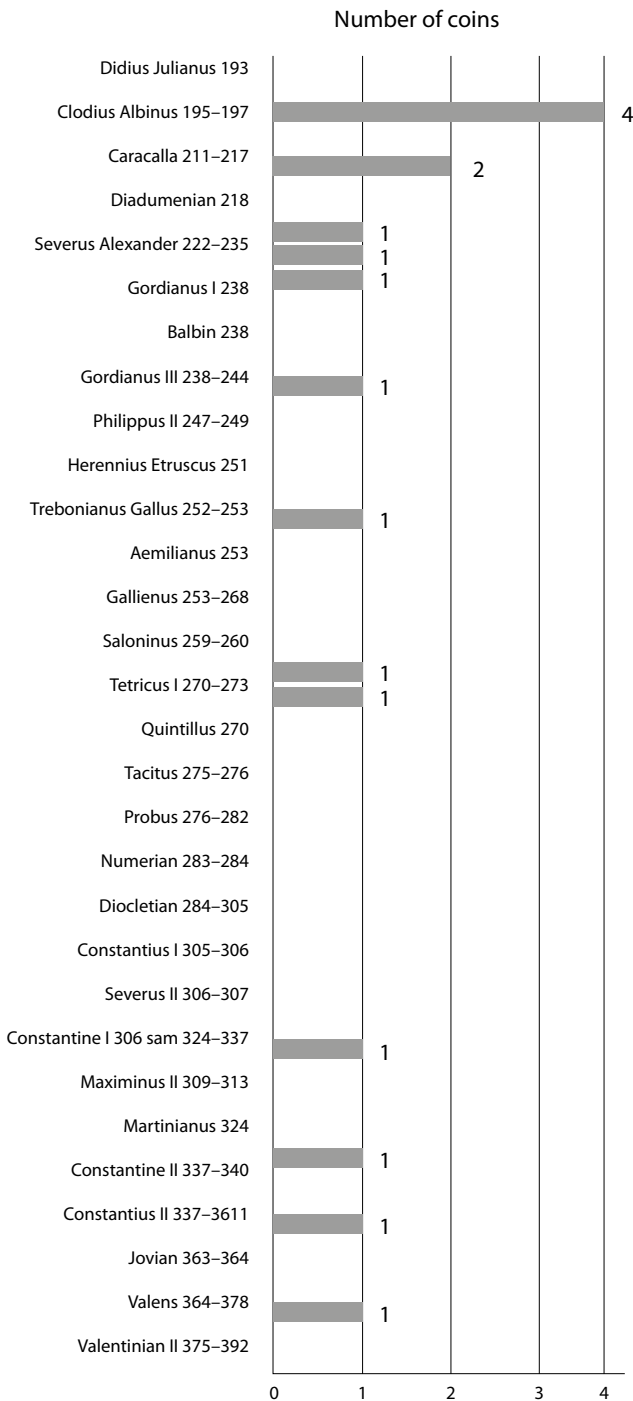


Chart 1 (part 2). Roman coins found in the Przeworsk culture settlements in Lesser Poland (prepared by A. Romanowski)

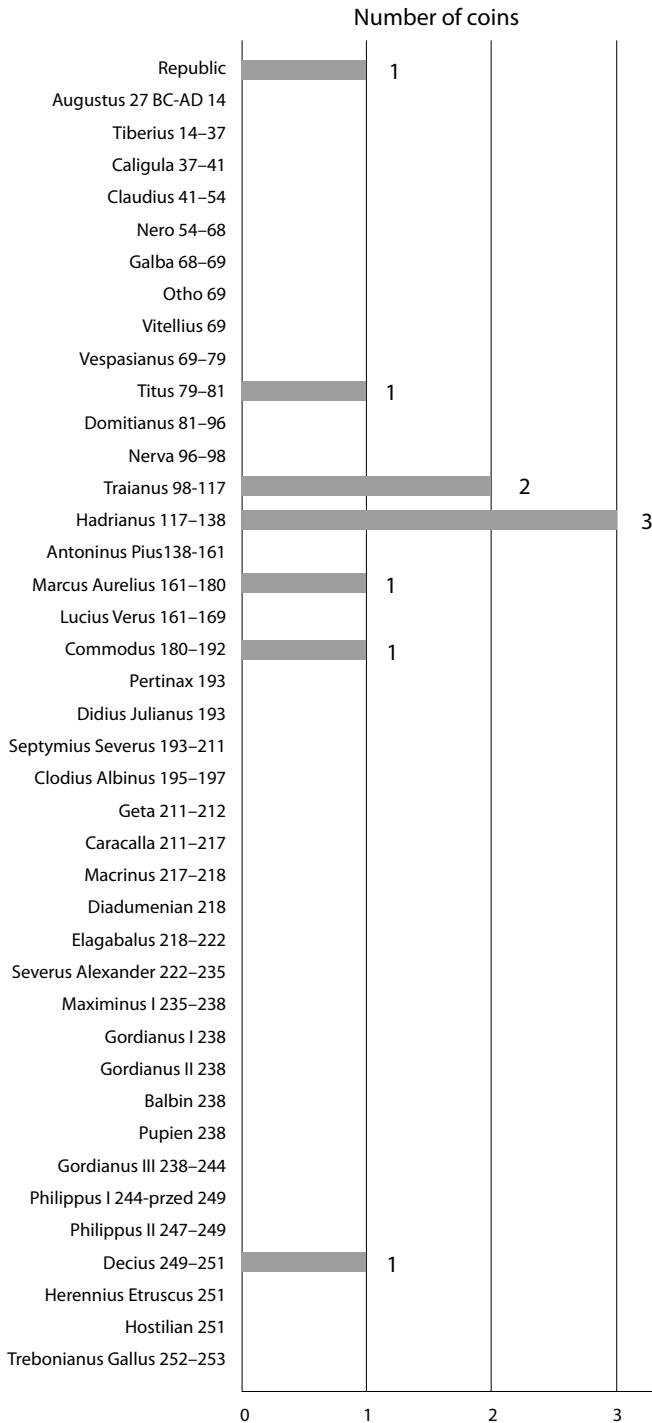


Chart 2. Number of new finds from the Przeworsk culture settlements in Lesser Poland (prepared by A. Romanowski)

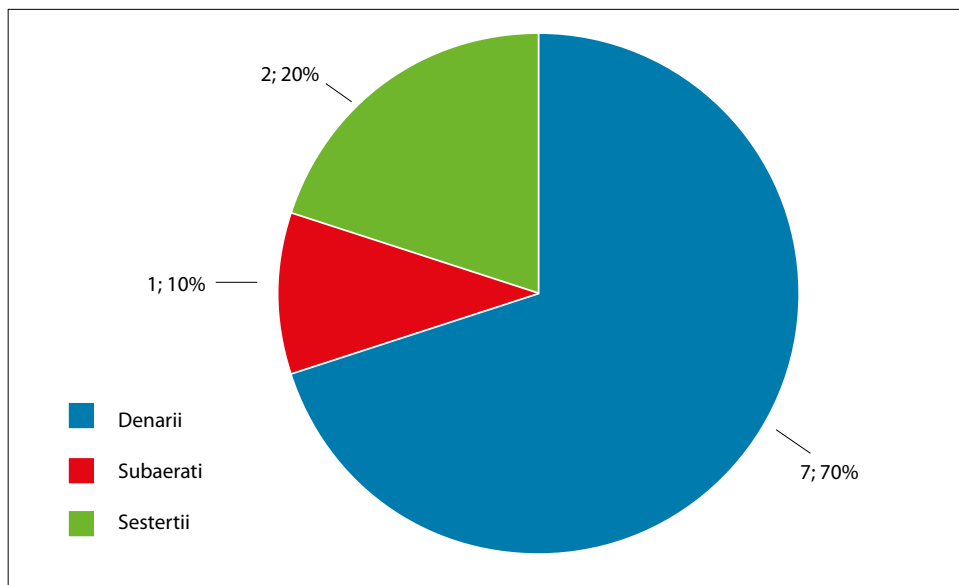


Chart 3. Nominal value structure of the new finds from the Przeworsk culture settlements in Lesser Poland (prepared by A. Romanowski)

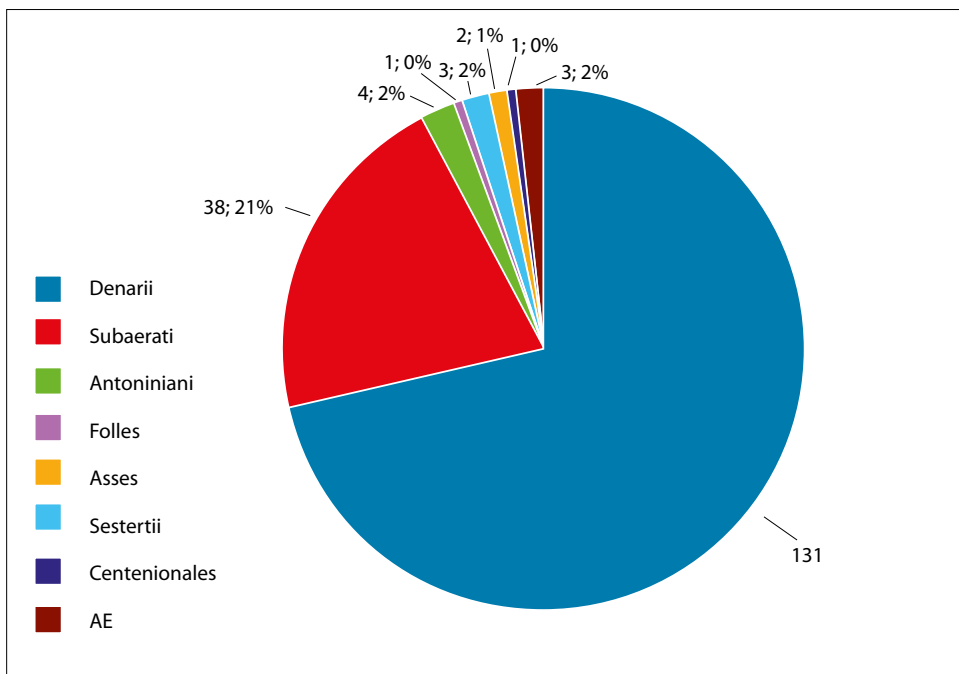


Chart 4. Nominal value structure of the finds from the Przeworsk culture settlements in Lesser Poland (prepared by A. Romanowski)

